

# Another Templar Theory

Lets call it “ Misdirection”



It's a mystery to me,  
The game commences,  
For the usual fee,  
Plus expenses.

Words taken from Private Investigations by Dire Straits, perhaps the most accurate way to describe the “Curse of Oak Island”

Rick's the easy one to convert, Marty is the tough nut so here goes

So where do we start, at the beginning of course, many miles away from Oak Island

Paris !!!, Yes Paris, the source of the original Oak Island Treasure Map  
and why they dig for the wrong treasure and in the wrong place

We all like to flip to the last page so we'll save you the trouble, here's the tasty bits.

Treasure Chamber	44°30'46.22"N	64°17'47.45"W
Stairs to Level 2	44°30'46.86"N	64°17'45.17"W
Entrance to Level 1	44°30'47.79"N	64°17'41.30"W

THE WHAT.. wealth, knowledge, the thrill or just an impossible dream.

THE WHO. Half decent rock band.. oh! you want the real ones, easy, Templars, who else could it be. I can hear you from the UK, OH NO NOT ANOTHER TEMPLAR THEORY, where's the nearest digital bin. This theory is a mere 30 pages, lots of pics so perhaps 20 mins to read, could save some one millions, certainly won't cost you anything and we do guarantee one thing, it will make you think.

WHEN.. From 1307 to ????, certainly after the Templars found out they were to be stabbed in the back by the French King.

WHY.. two fold answer, in Europe they were facing the end. Oak Island, part of a new start, that went badly wrong, they didn't know the little ice was just around the corner.

HOW.. Read the next 30 pages and you'll know, yes we are that confident.

SMOKING GUN.. Nope don't have one of those but we do have a SMOKING SWORD

Well if you got this far, sip that coffee and let's begin.

For everything to make sense we have to THINK LIKE TEMPLAR'S, although we are not sure you ever could. We had the luxury of Google Earth and the internet, even we missed the complete plan to begin with. We don't mind admitting we were fooled. Who the master plan builder's were we do not know, what we do of them is they were genius's. They built everything in plain sight and managed to hide it from us and their enemies. By the time you reach the end of our theory we are pretty sure you will agree with us.

So what do we mean when we say, think like a Templar. No fancy computers, no computer maths, no GPS, just plain old common sense, a bit of history, a plan, keep it simple and hide the truth. Just the way we like it.

Every treasure map needs certain things;

A diagram (master map) of where to go, yes there was one and it's still there if you know where to look. Takes a bit of digging (no pun intended) but it's still there, perhaps that should be, both of them are still there.

And of course X marks the spot. Dig here and become very rich.

Diagram. This could be a mobile hand held map or a static objects map.

1. A mobile map. Whilst easy and portable has the disadvantages of the possibility of being lost or falling into the wrong hands.
2. Static Objects. Not easy to loose but very easy for every to see. Of course if you do not know the meaning of the diagram it is pretty useless. If you need to hide something then do it in plain sight and that's exactly what they did.

### The Master Map

This was devised in France, Paris to be exact. We can even tell you where, perhaps not the exact room but certainly within a very small area. We are very confident of this and can prove it. Yes it's a



bold claim to make but if your going to publish a theory then you have to be. So another gulp of coffee and let's move on.

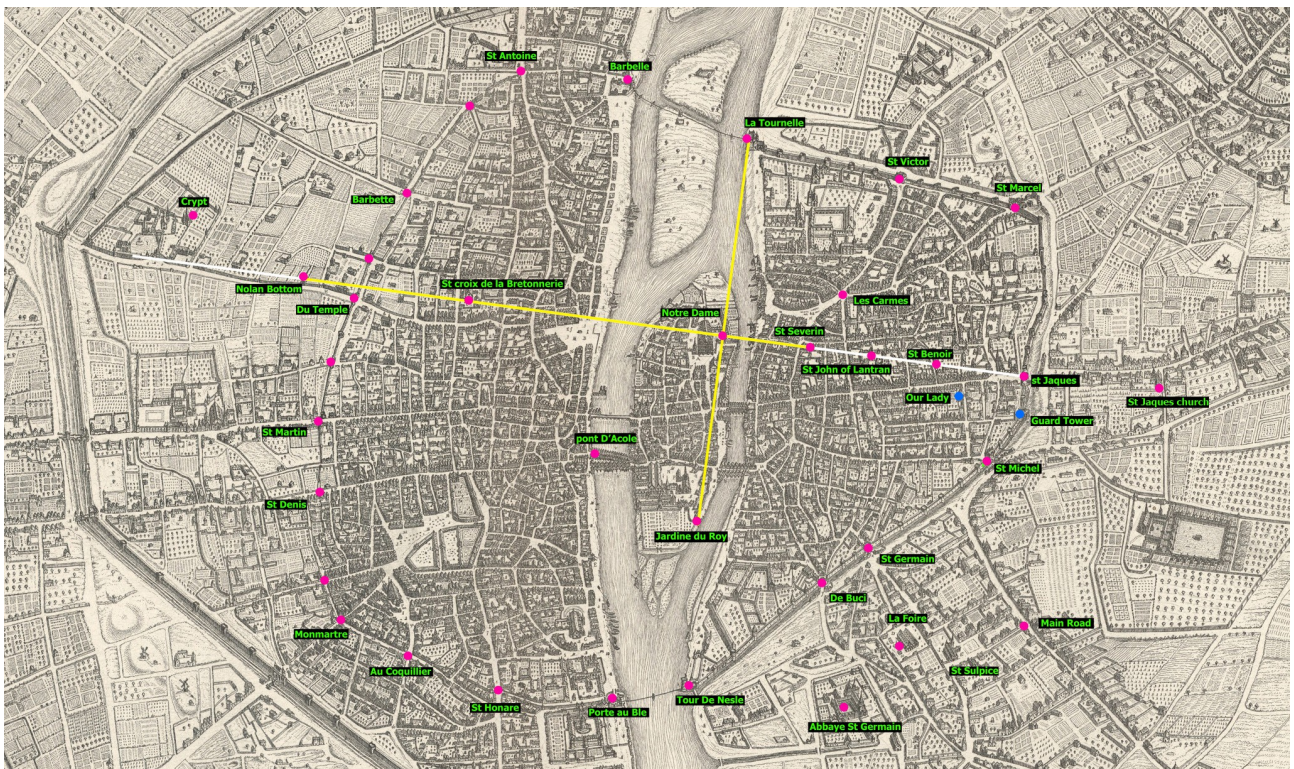
The end was in sight for the Templars, perhaps rumours of their impending arrest had reach the ears of the hierarchy. Time to act before it's too late. Templars had amassed a vast fortune so now it was time to hide that treasure for a rainy day. Quite where it went is something only history knows, we all hope it ended up on Oak Island. We think some of it did, does any of it remain, time will tell.

So lets look at the first part of the plan. As we say it was devised in Paris and it's built around Paris before 1307. Paris at this time was a relatively small place. It was surrounded by a fortified wall , built by King Phillip Augustus. Perhaps not by him but decreed by him can't see King Phillip getting his hand dirty.

The Templars lived in a small to medium fortified compound. The Grosse Tour being one of it's dominate features. Ir was so well defended the King held his treasure there, what little he had. This is one of the reasons behind the Templar purge in 1307, he was broke and in debt to the Templars, but we digress. It was in this compound the Master plan was drawn up. Room 2A

So, at this time in history we had, a walled Paris city, a Templar compound, 5 Abbey's, 25+ churches, multiple convents and hospitals plus Notre Dame. So what about the Plan we hear you ask. We're getting to it !

It goes like this. We climb to the top of Notre Dame and look around Paris, being Templars no one would stop us. We see our compound, churches and city gates. Abbeys and convents don't interest us, for now. The genius behind the plan starts to notice things line up, so well you could almost believe they were arranged that way from the beginning. This is the first part of the plan







Nolan Center Stone	Notre Dame
Nolan North Stone	Château de la Tournelle
Nolan South Stone	Jardine Du Roy (end of the royal Garden)
Nolan Head Stone	St Severin church
Nolan West Stone	Ste Croix De La Bretonnerie
Nolan Bottom Stone	A small parish church just outside the Templar compound
Missing Stone	St John of Lantran

Some points that need a mention

Château de la Tournelle, a fortified part of the Phillip Augustus wall. It's on the west bank of the river Seine and guards against entry from the south.

Ste Croix De La Bretonnerie. This was given by the king to “ a band of brothers who carried their cross on their chest”...sound familiar

St John of Lantran (Lateran) , is the site of the Commanderie de Saint Jean de Latran. Templars Mk1, dedicated to John the Baptist, as were the Templars. Eventually taken over by the Templars.

Another sip of that coffee as we proceed to the next part of the plan. Phillip Augustus wall..

This wall is of great significance to the plan. It's used as the building blocks to lay out the plan. There are a total of 23 gates (porte) in the wall of which 18 are used in the master plan, though all 23 could probably be used we just went for a lower number to keep things simple. These can be seen on diagram 1. The significance of these gates become obvious when we lay them out on Oak Island. When lines spread out from the gates to other gates they pass through points on Nolan's Cross and eventually lead to the Crypt and Treasure Chamber. Unfortunately they also play a roll in the money pit, something we tried to desperately to avoid but the lines don't lie. Plus they all cross at the EYE of the swamp, within a margin of error.

As we have mentioned the Crypt lets deal with that now. In our first theory draft we missed this altogether having thought a Crypt was where you bury your dead. However this was not the case during Templar times, it was a place to keep your valuables. A big light bulb moment for us as it meant we knew where the treasure should be buried.

Using the 1380 map above we were able to plot the locations of the gates and use this as an overlay on Google Earth. Some may say, why didn't we take the locations of the gates from Google and use these for the overlay. As far as we know, Templars didn't have any means of time travel so the best they could do is with a map of their time period hence the use of the 1380 map. As it turns out, that map is quite accurate. Shame it didn't have names on it as it meant a lot of searching and the gates and churches changed names over history.

Now to move the master plan across the Atlantic to Oak Island. Lots of pictures, not many words so finish that cold coffee and lets get going. Or brew a new one.

## OAK ISLAND

Disclaimer....accurate information regarding stones, drilled or otherwise is hard to get as the boys keep it somewhat secret, so any locations are a best guess, a good guess but still a guess

As we have said, the Holy Sepulchre laid over Nolan's Cross is very accurate. So that's the first thing to do for us. Of course this will give the treasure location but the Templars didn't have the



luxury we have so they had to build the plan on the ground.

Here is the Master plan laid out on Oak Island. If that is all you are interested in you can stop here, else read on to see how we arrived at this fantastic planning by the Templars. Of course if you want to see how the dreaded money pit fits in, you're gonna have to suffer and read to the end.



Still here? Ok let's crack on, mainly pictures so it's an easy read. Don't forget your coffee

We know where Nolan's Cross north stone is, so using data on the internet we could plot the remainder of the cross. So now we had to think like Templars. Lay this out on the ground to confirm what we knew from Google Earth.

We gave some thought as to why the cross is at an angle of 60 degrees. Well, it seems 60 degrees is quite popular back in good old Paris.

60 degrees from north at the Notre Dame north tower passes straight through the centre of the church St Jean en Greve, this is where the Templars built their first church. By a strange quirk of fate or master plan, 60 degrees is also the angle, measured from North, from the spot where poor old Jacques de Molay's statue resides to the Grosse Tour, (Great tower or Great Keep, where the treasure was kept). 60 degrees seems quite popular. More importantly, it's the only angle that would allow the plan to be laid out in the Templar era.

We think at the time of the Templars, Oak Island was 2 islands separated by a small waterway. The area that is the left side of the swamp may well have been marsh type ground. The entrance on the south side of the island may well have been quite narrow. If you look at the sea bed it looks like the waves are more disturbed to the left side and the right seems to be deeper as if it was the entrance to the waterway. Of course this is just conjecture on our part as we have no data to work from just what we see. Red lines indicate where the waterway may have gone. Yes it looks like the River Seine and goes past Notre Dame in the right place and the eye is correct, minor details, artistic



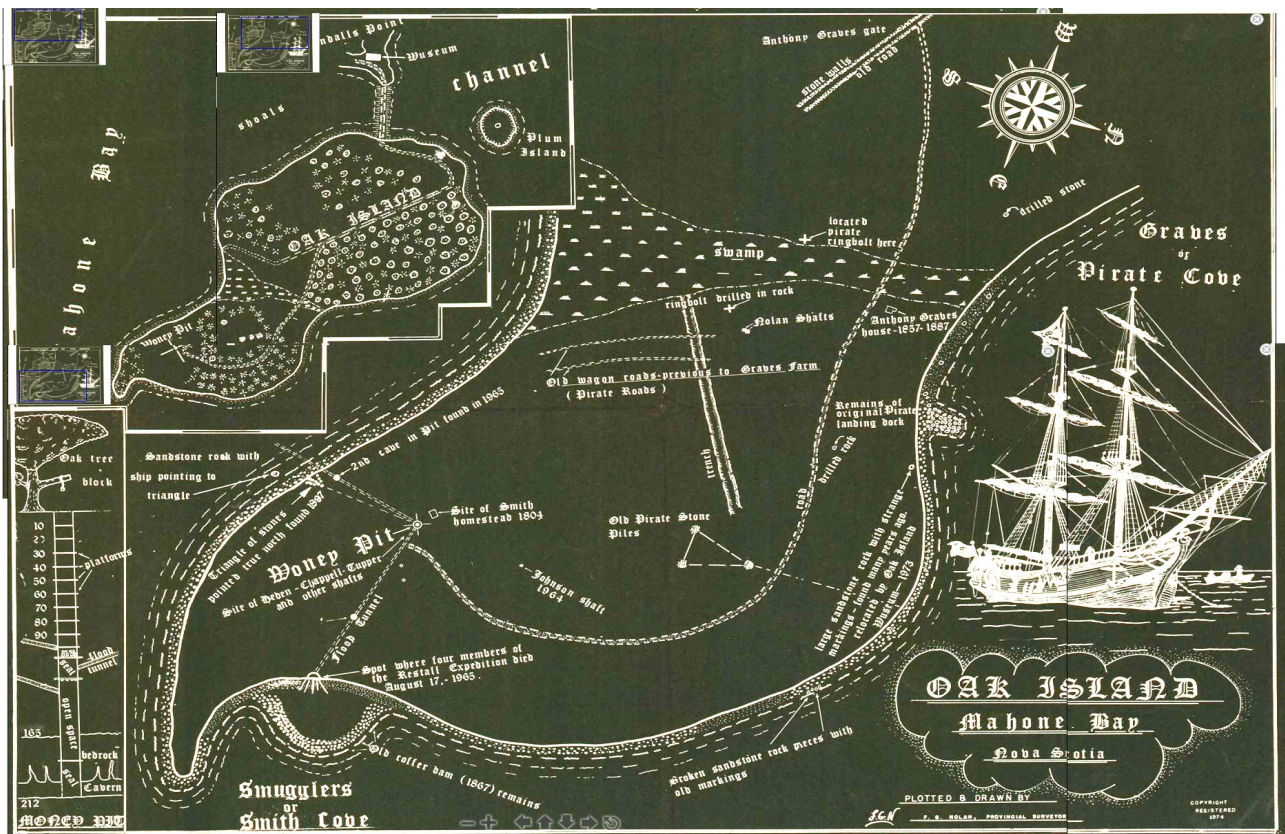
licence it's called and as we write the theory, why not.



### Master gates to aid location

We plotted these using a overlay from the 1380 map. Some locations are already known on the ground from information we have been able to borrow from YouTube and Google Earth. We used a map that we saw on an official YouTube video, Restall Survey plus Fred Nolan's Pirate map available on the internet. A quick note on this map. It may have been a tongue in cheek pirate map but when positioned on the island it's quite revealing. Like all good treasure quests it's only when the seemingly impossible is included that things start to make sense and this includes Fred's map. These maps and screen grabs were scaled and slightly warped to better fit features already on the ground, ie coastline and the house. These features are fixed and provide a solid reference system.



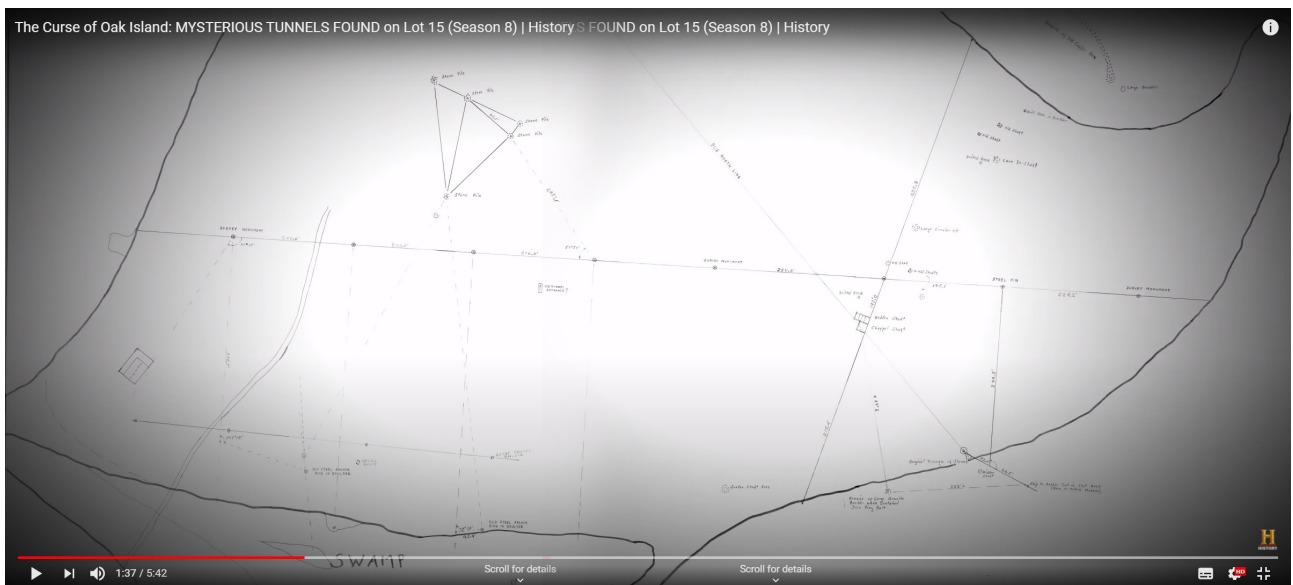


Pirate map by Fred Nolan. There were several drilled rocks identified on this map. When plotted they aligned with locations on our Paris gates overlay.





Map overlaid onto Oak Island with previous theory underneath for the eagle eyed. One thing to note is the swamp boundaries. Not to dis-similar to ours.



Screen grabs from a YouTube clip



Screen grab rotated into position. Overlay has been slightly scaled to better match the coast and house location. Black dots are locations marked on the initial map. Of note is the triangle of stones towards the top, a seemingly innocent and unconnected triangle but when included in the master plan makes perfect sense. The original stone triangle position (bottom dot) and the 2 drilled stones which are above and to the right of the original stone triangle are also shown. A possible tunnel entrance is shown in the middle of the map, later identified to be a pine tar kiln. What was important to use about this site is the discovery of a survey stone. One of our gates is very near to this location so we assumed this stone could well be the one for the gate and could have been moved to assist in backfill of the pit





Restall survey overlaid onto the island, mainly used to confirm the locations of 2 drilled stones. These stones become part of the dreaded money pit extension to the master plan. My brother Dave and I disagree on the money pit extension. He is of the opinion it's a separate time in history and he could well be right. I disagree with that assumption. Whilst it could be a different time period it's certainly connected to the master plan builders. As I have said earlier I tried my best to NOT include this area but there are too many lines which intersect at the extension locations for it to be ignored. See later pictures to see why I came to this conclusion.

OK, lots and I really do mean a lot of pictures showing the locations of Paris gates and their interconnection with each other and other parts of the master plan. Each gate is connected at least 3 times with the exception of St Martin, but St Martin goes to the Money pit, damn. The most interconnections goes to the eye of the swamp, it really is the centre of them all, quite a surprising find when we plotted them all, but then Oak Island is full of surprises.

Your coffee's cold, best go make another one.

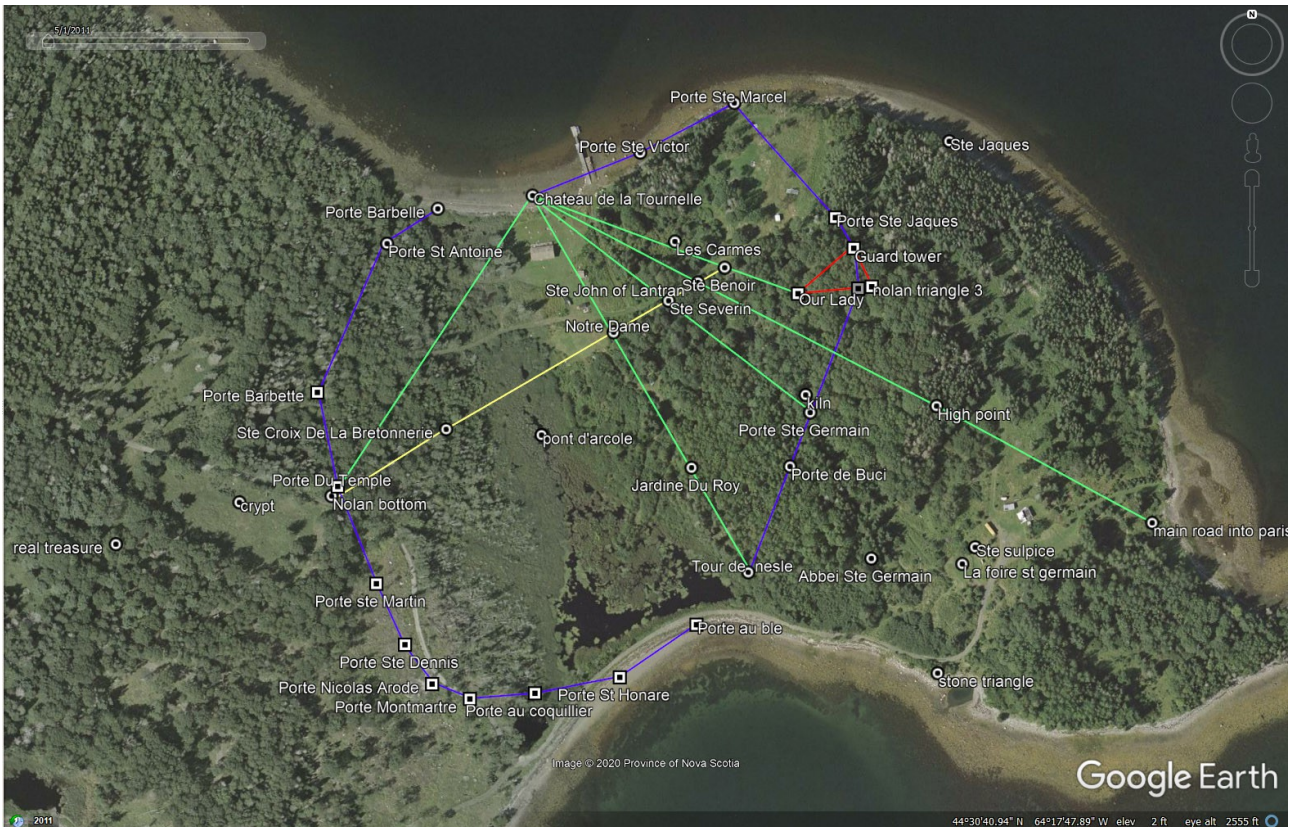
Now your back lets make a start with what we consider the initial locations, naturally, these are on the coast, big rocks for the most part, one well known, 2 from the pirate map (said it was important) and one, maybe 2, still to be found.

A quick note on gate/church names. They seem to change over time and which map you are using so they are a best guess and author discretion. The eye is listed as Pont D'Arcote, this is just the area. There were lots of bridges over the Seine as many simply got washed away so please bear with us on this one.

Ste is used represent Saint as that was how they seem to be on old maps.

Porte, French for door/gate



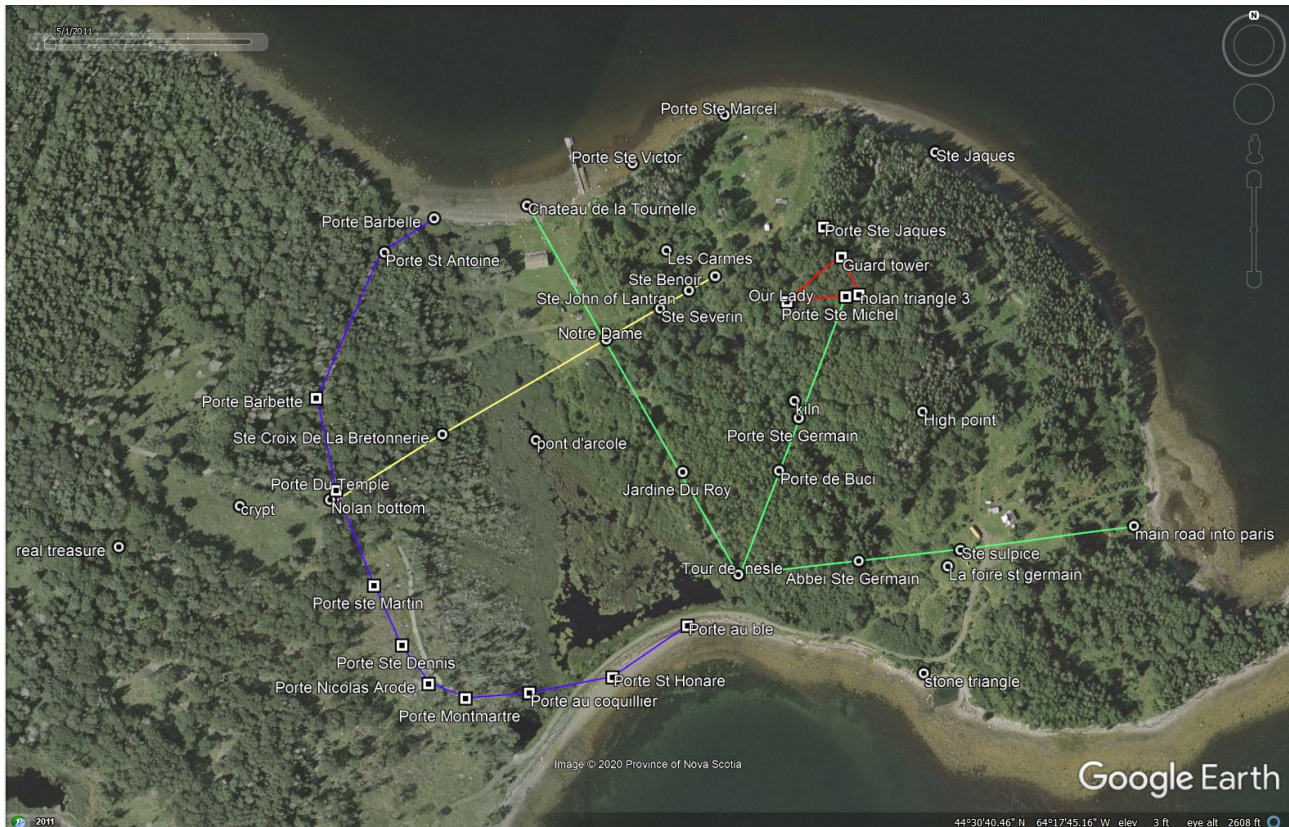


Château de la Tournele. Probably the first to be laid out, from this we can align Nolan's Cross (Notre Dame, Ste Croix de la Bretonnere, Ste Severin, Ste John of Lantran, and Ste Benoir). Start to align Tour de Nesle, Porte du temple, Porte St Germain and part of the dreaded extension.



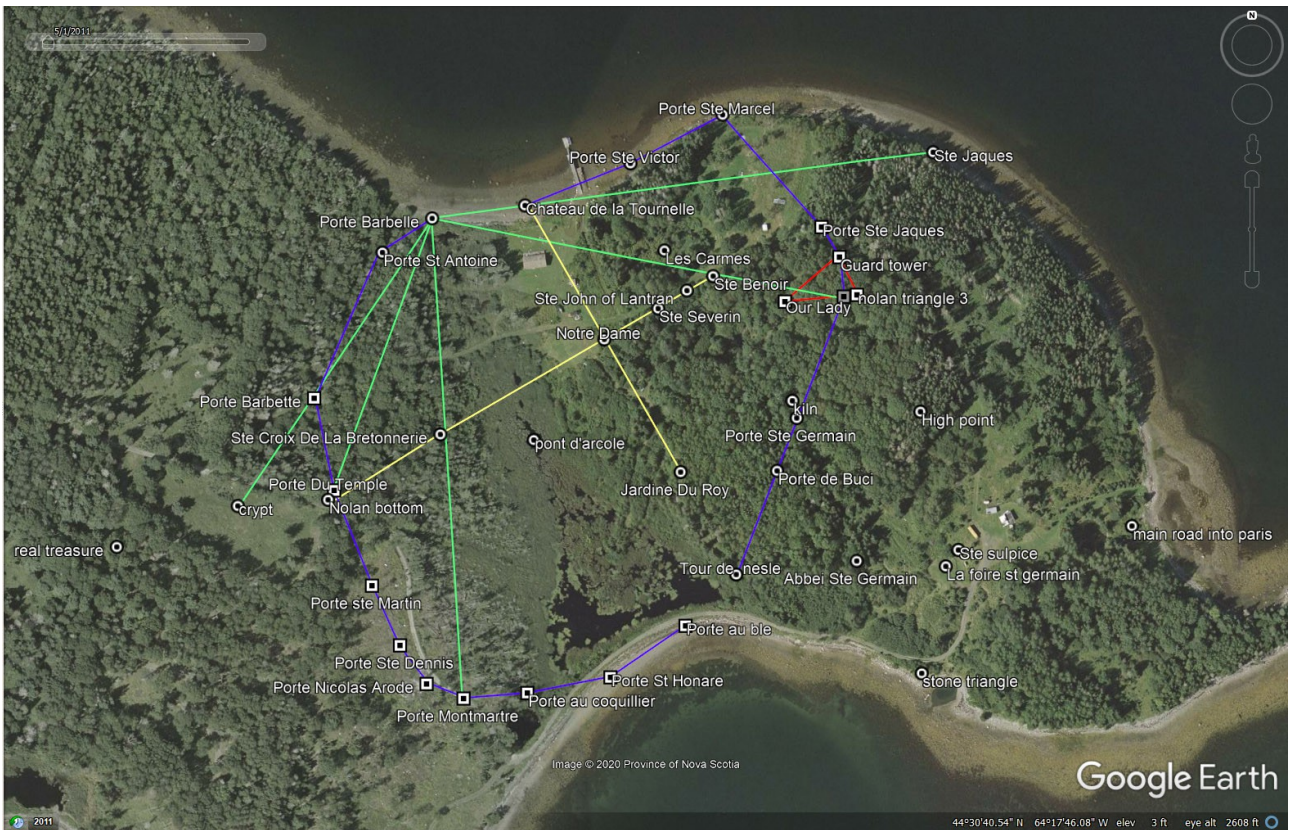


Ste Jacques A seemingly in-oculus church outside of the walls of Paris. It is used to aid the alignment of Nolan's Cross long leg. This is taken from the Pirate map, it's listed as "Broken sandstone rock pieces with old markings". As we can see it not only aligns the cross long leg and one of the cross arms it also allows us to find, Porte Barbelle, Porte Nicolas Arode ( if your a fan of the extension an important one) Our Lady and both Porte Ste Michel and Porte Honare in one go.

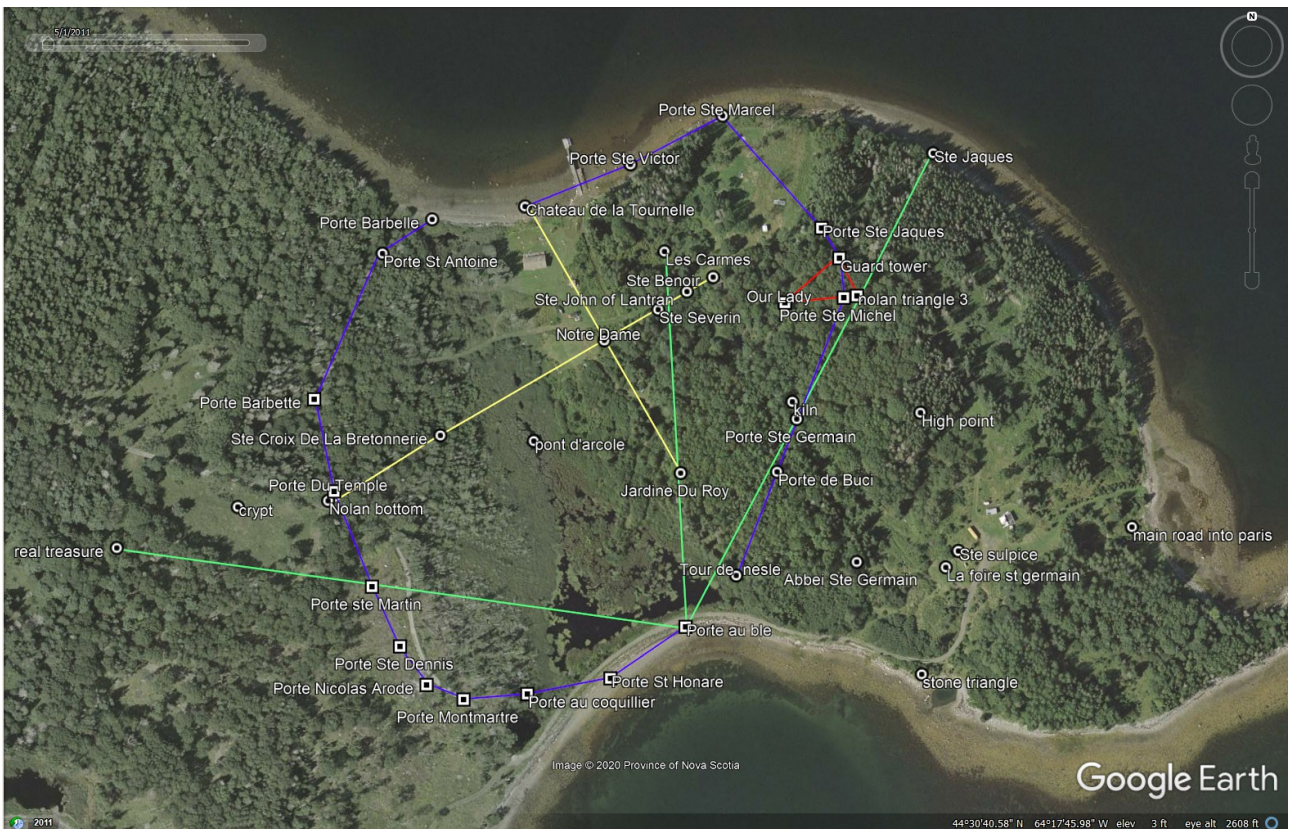


Tour de Nesle. One of the North gates on the River Seine so quite a natural fit to be at one corner of the swamp along with Porte au Ble As mentioned above, we think that at the time of building this may well have been the other side of the waterway. So from here we can confirm alignment of the cross, start to align Porte de Buci, Porte Ste Germain and Porte Ste Michel. And that extension





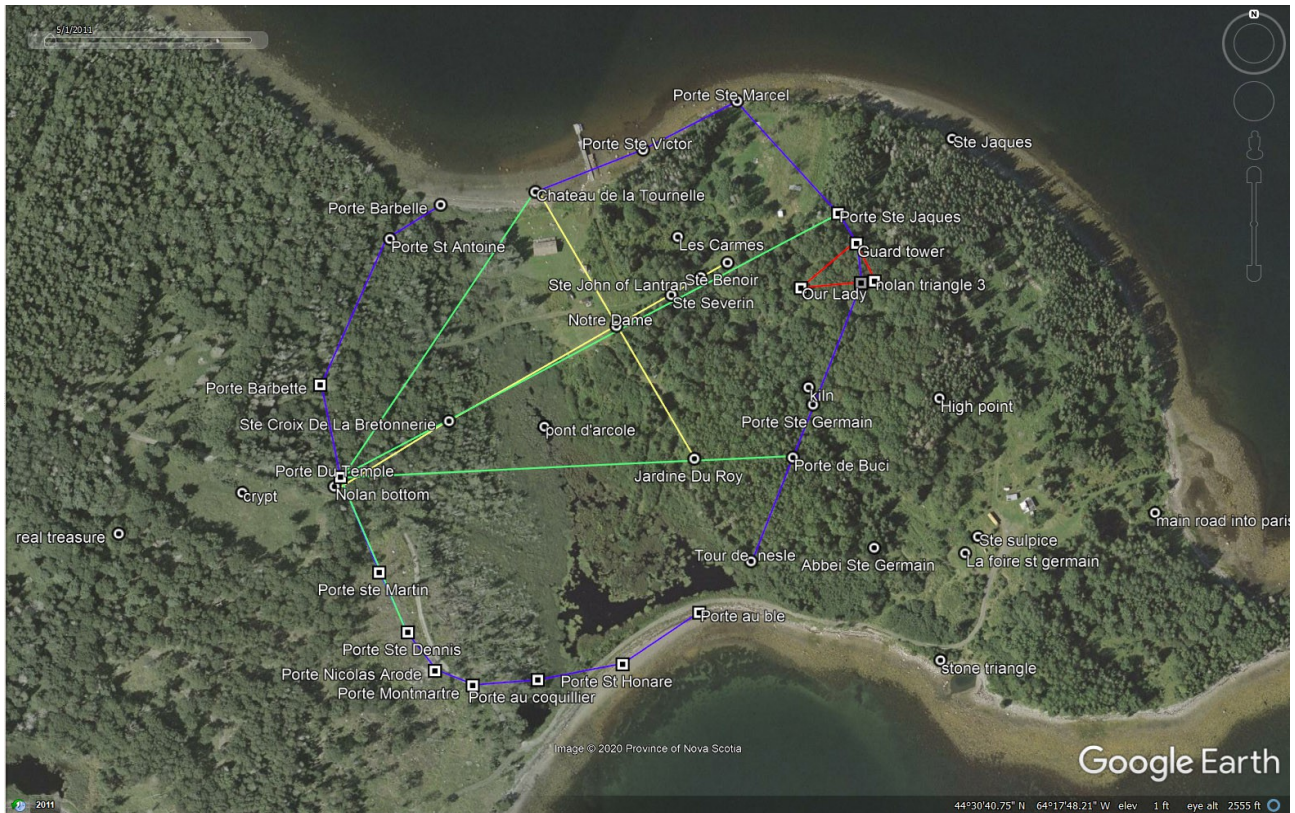
Porte Barbelte. Confirms the location of Porte St Michel, Porte Ste Benoit, Porte du Temple and Chateau de la Tournele via Ste Jacques Starts to align Porte Montmarte, Porte Barbelte and the Crypt



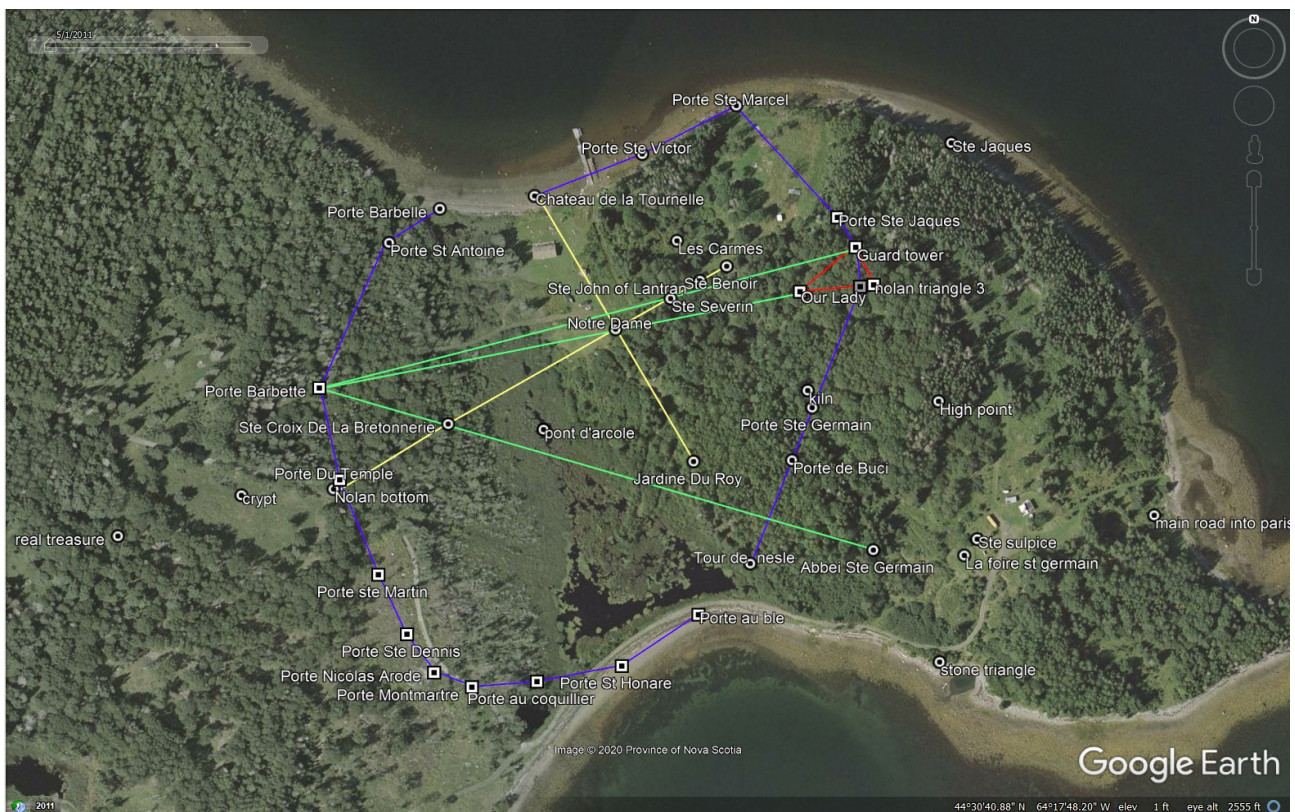
Porte Au Ble. North gate into Paris on the river Seine, quite a substantial fortress and given it's



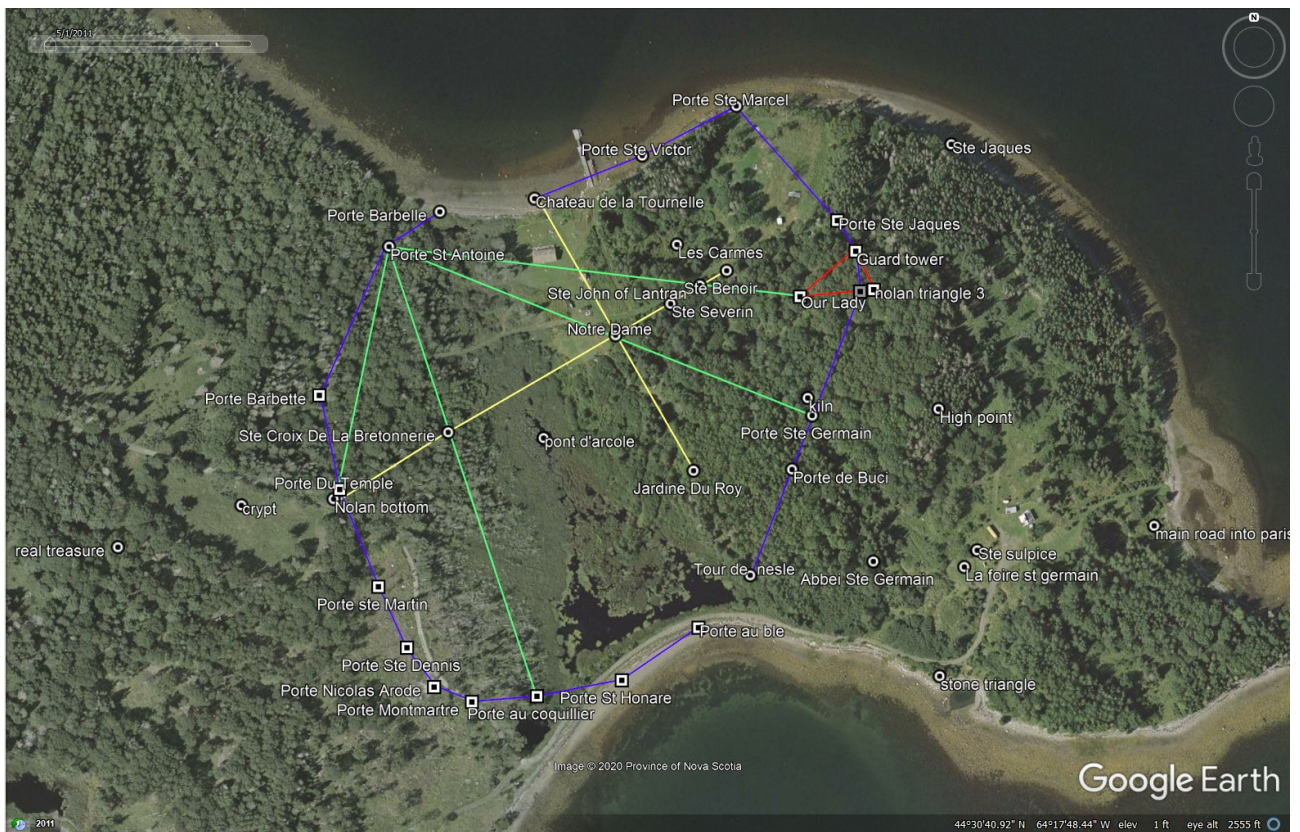
location on Oak Island it would seem to guard the entrance to the waterway. From here we can confirm the location of Jardine du Roy, (bottom of the cross short leg) and Porte Ste Germain. We can now start to plot Porte Ste Martin, Les Carmes and the top of the treasure steps. So from just 5 points we can lay out quite a lot of the gates and other locations. Rather than keep explaining we will just insert the pictures and you can work out the connections yourself.



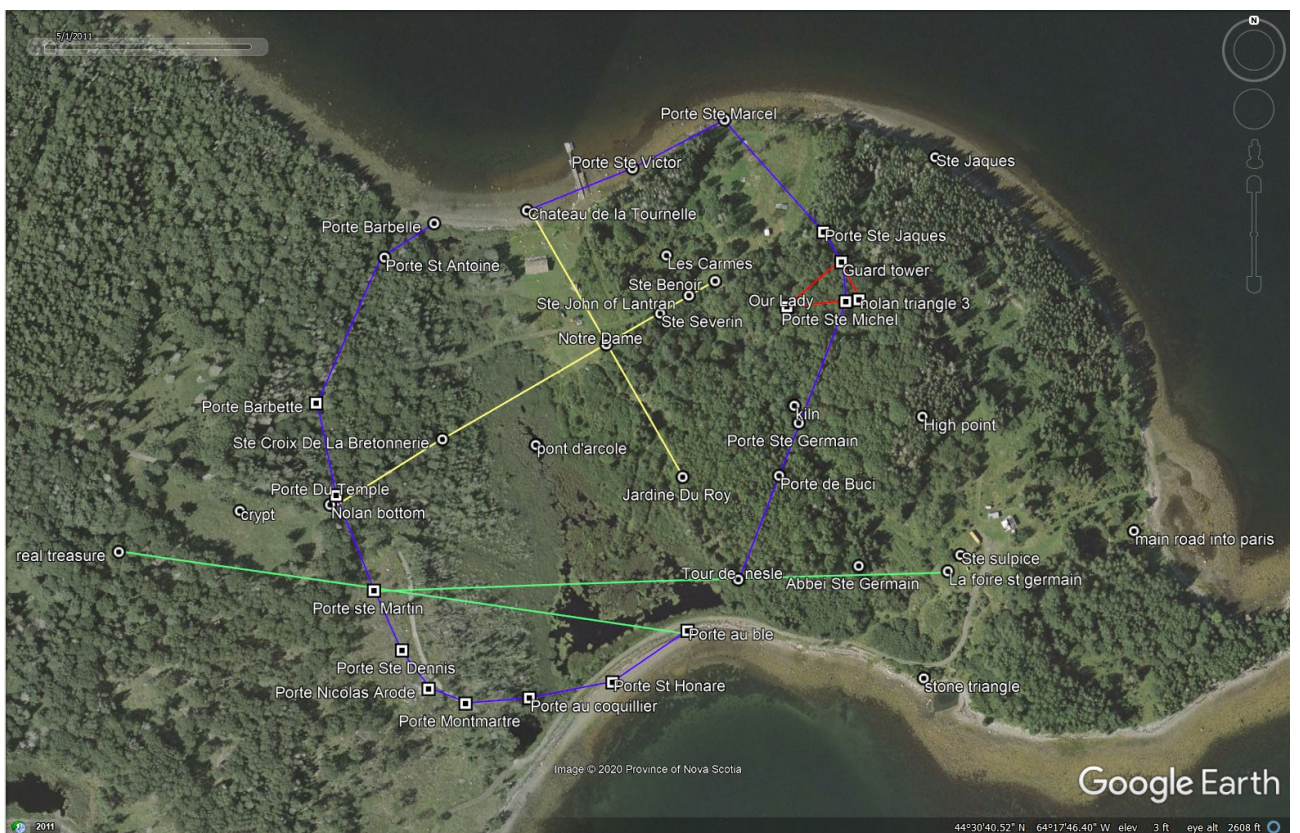
## Porte du Temple and Porte Barbelte



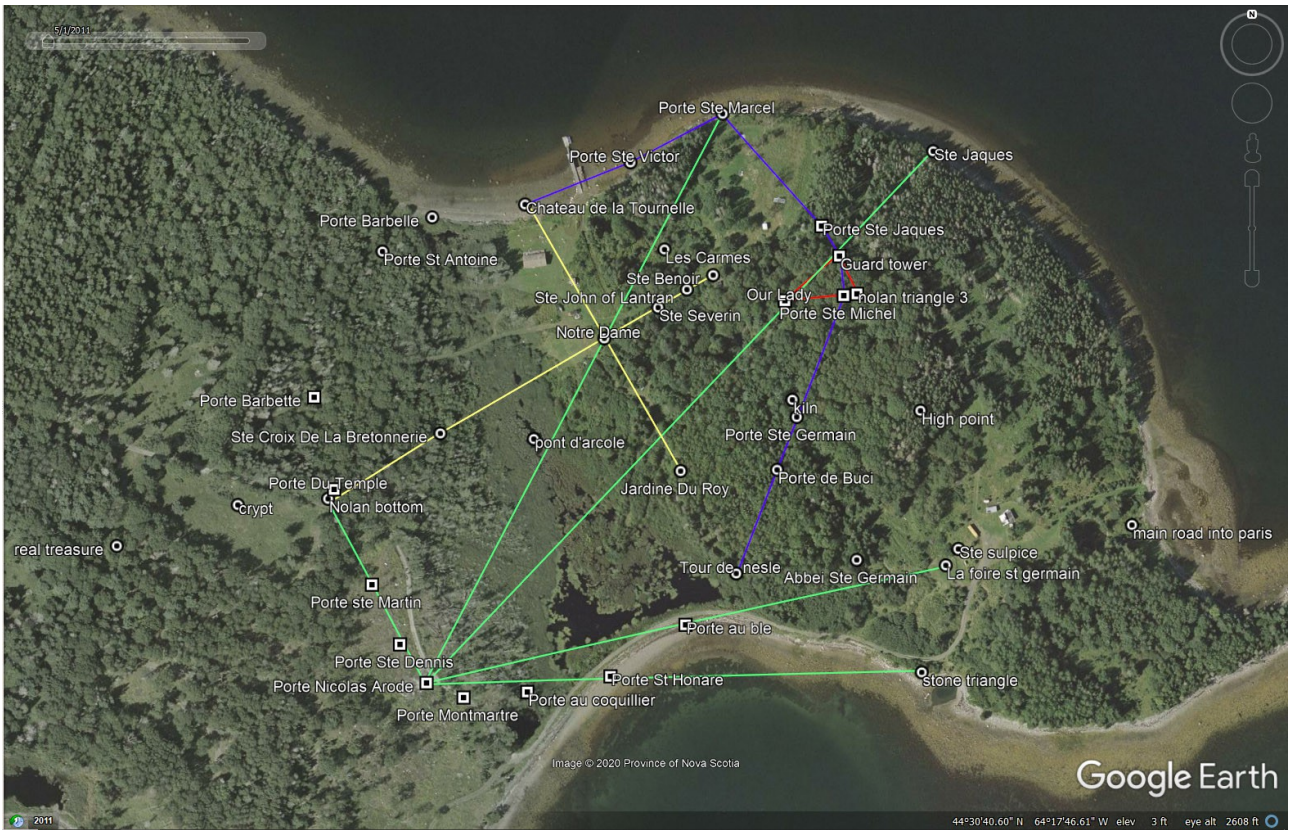




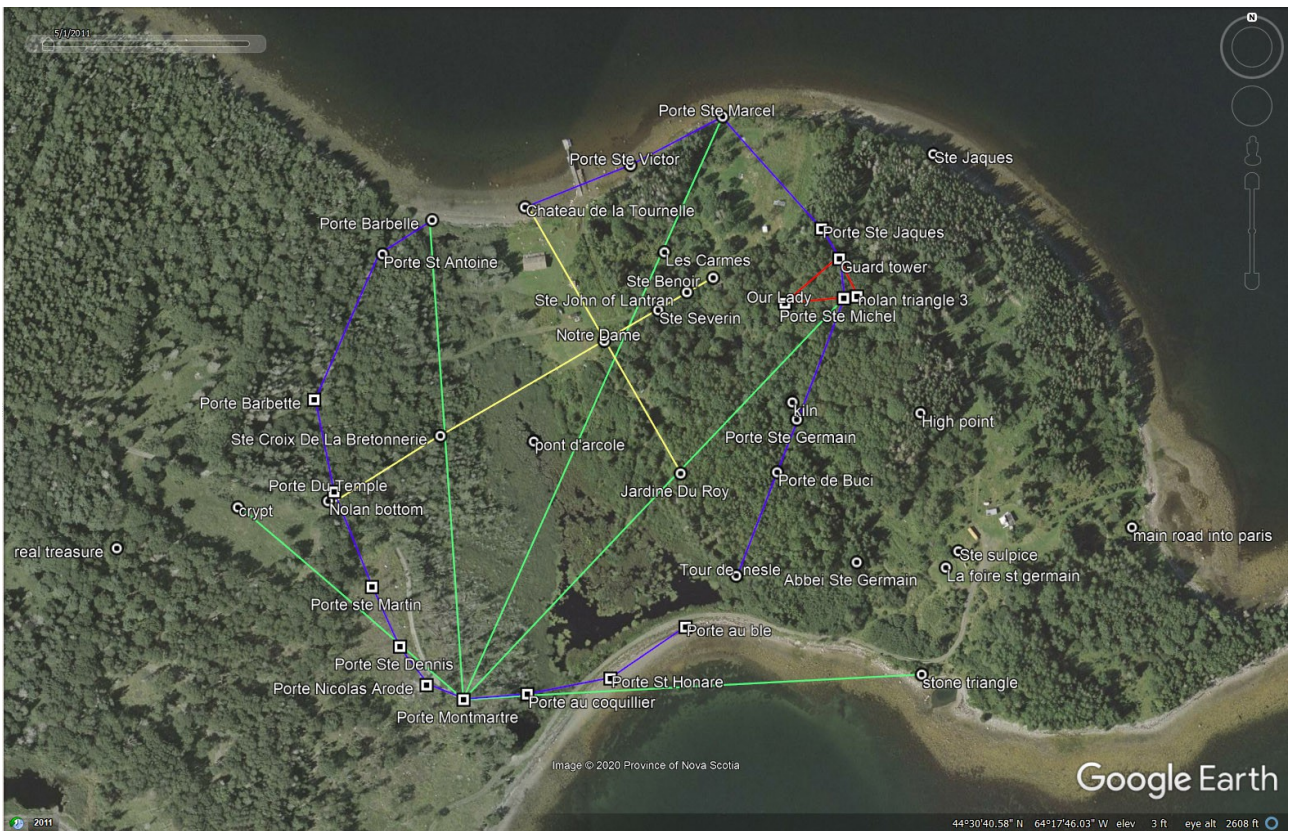
### Porte Ste Antoine and Porte Ste Martin



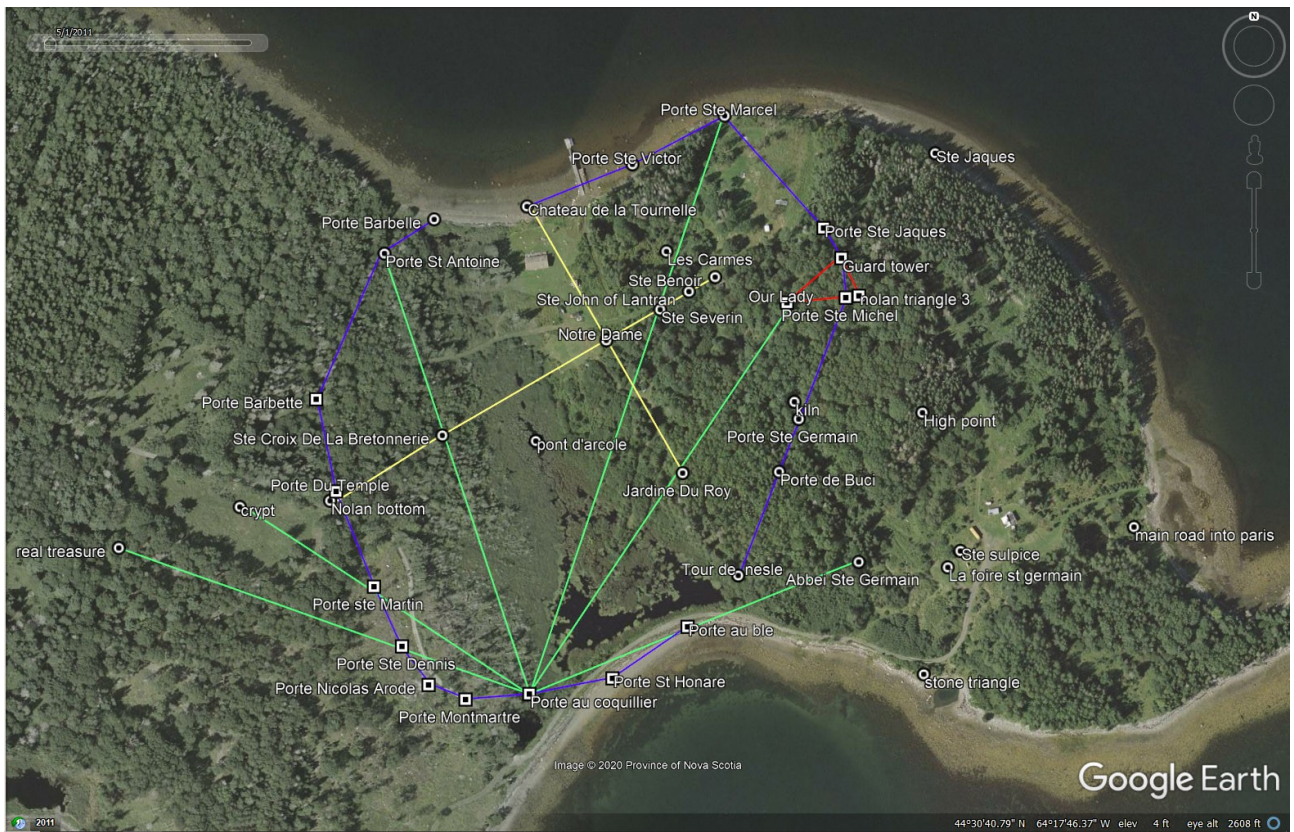




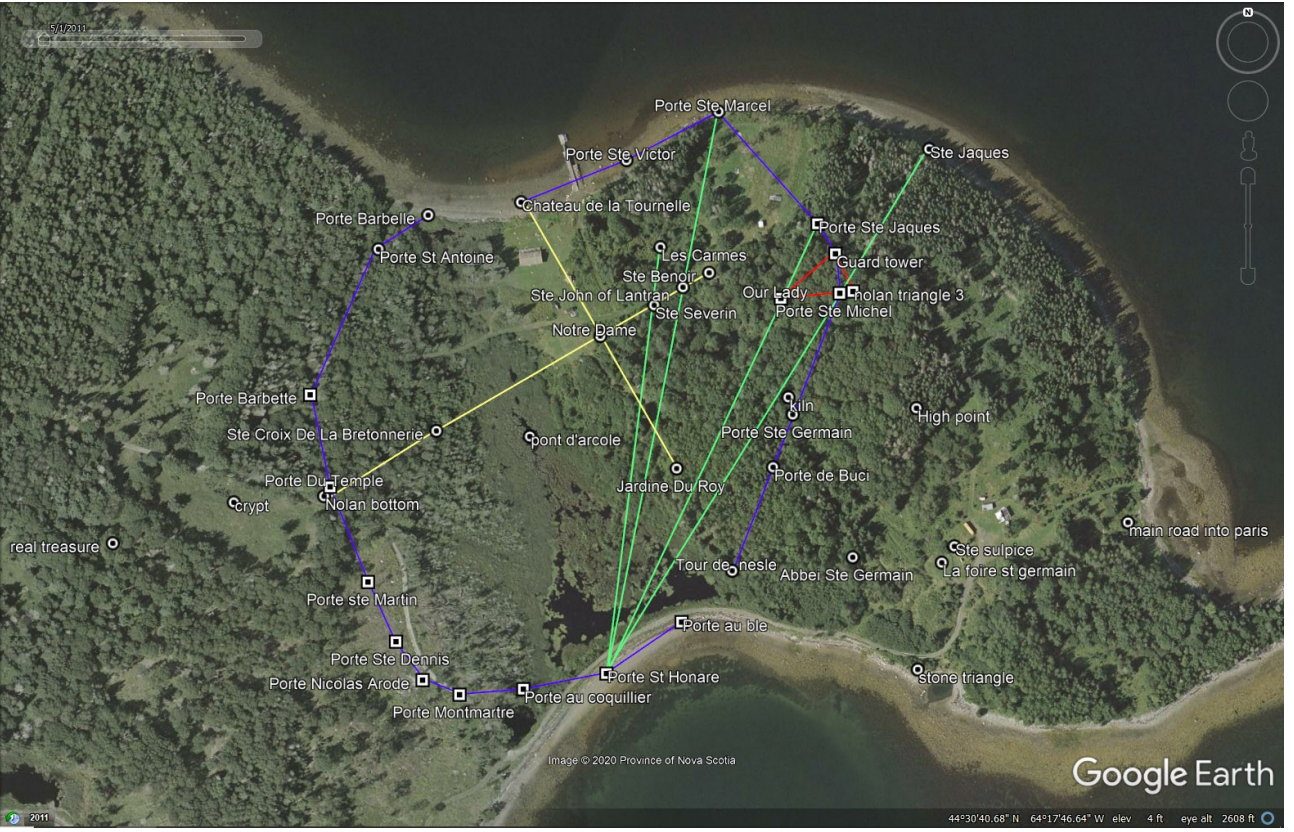
Porte Nicolas Arode and Porte Montmartre



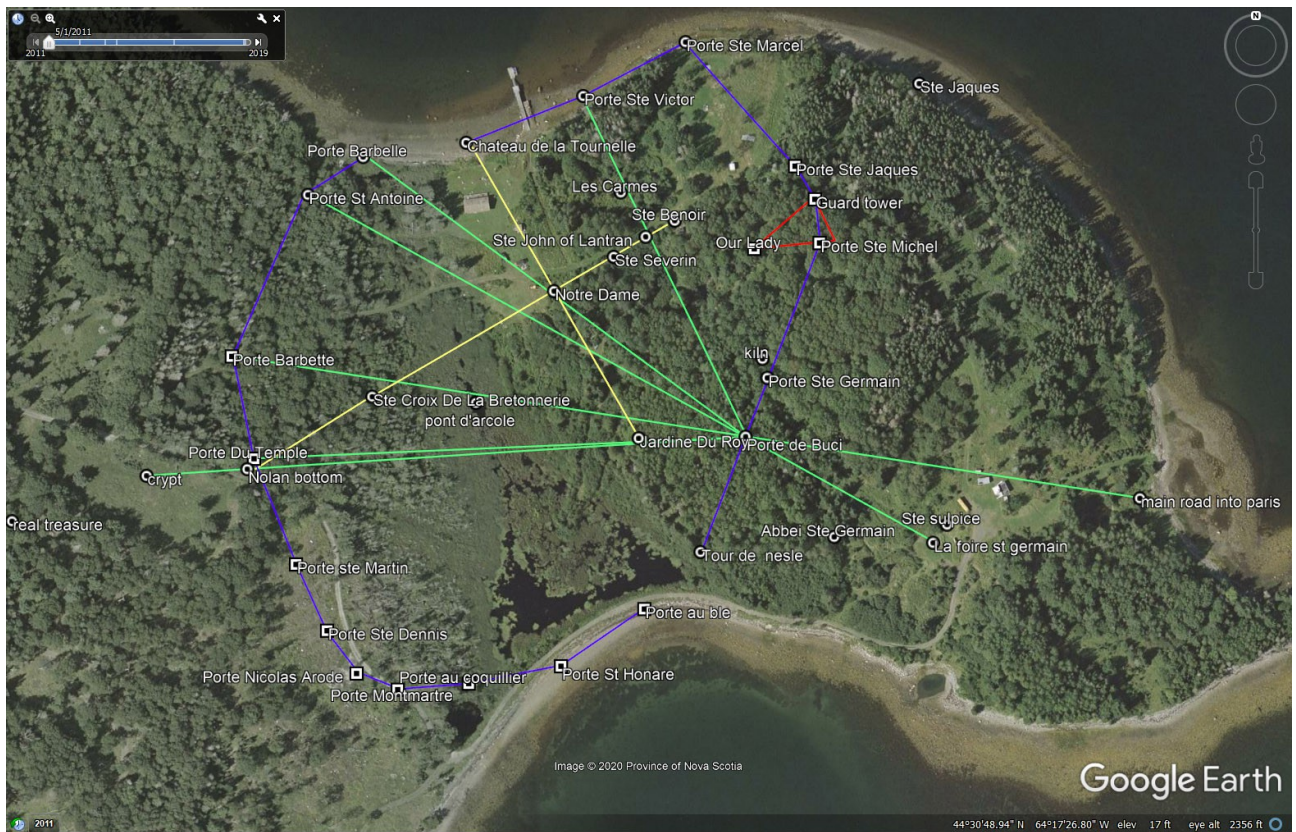




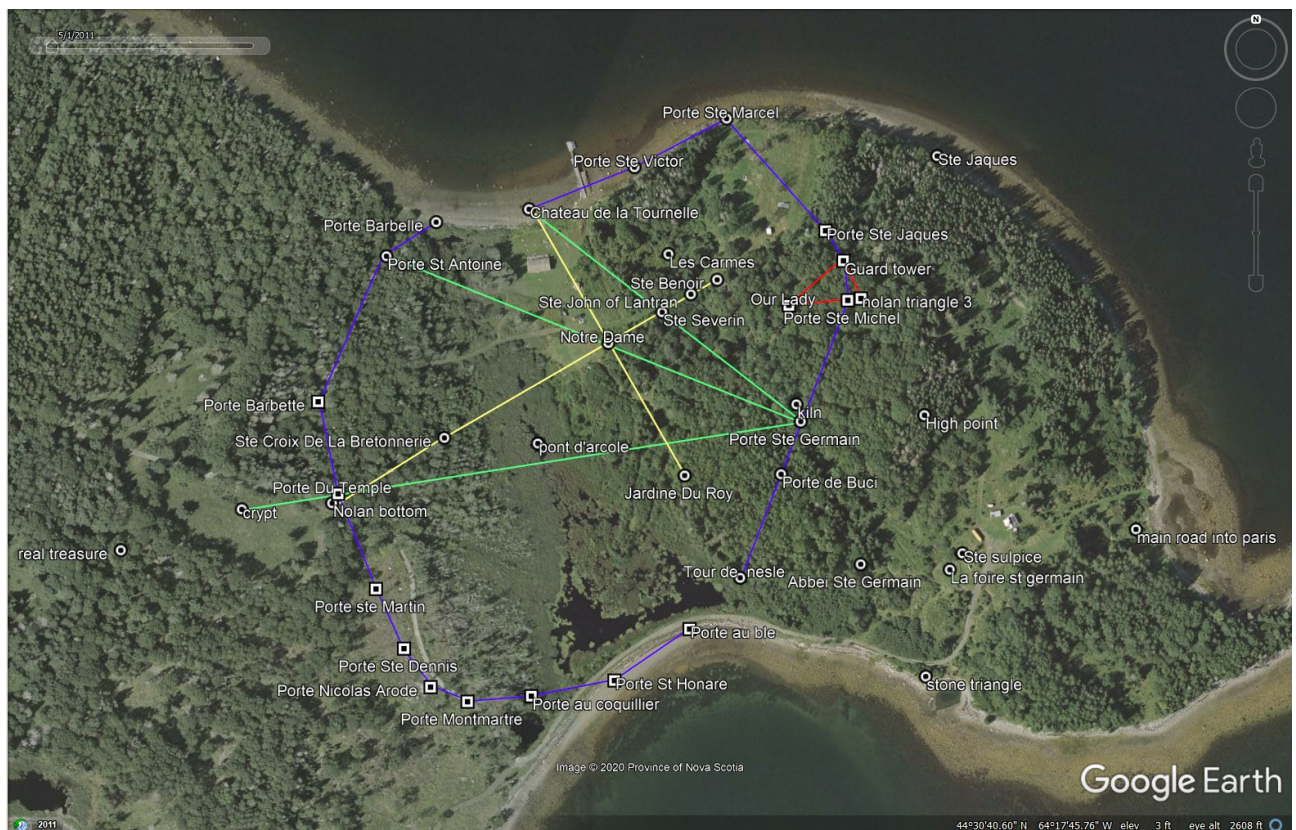
Porte Au Cocuiller and Porte Ste Honare.



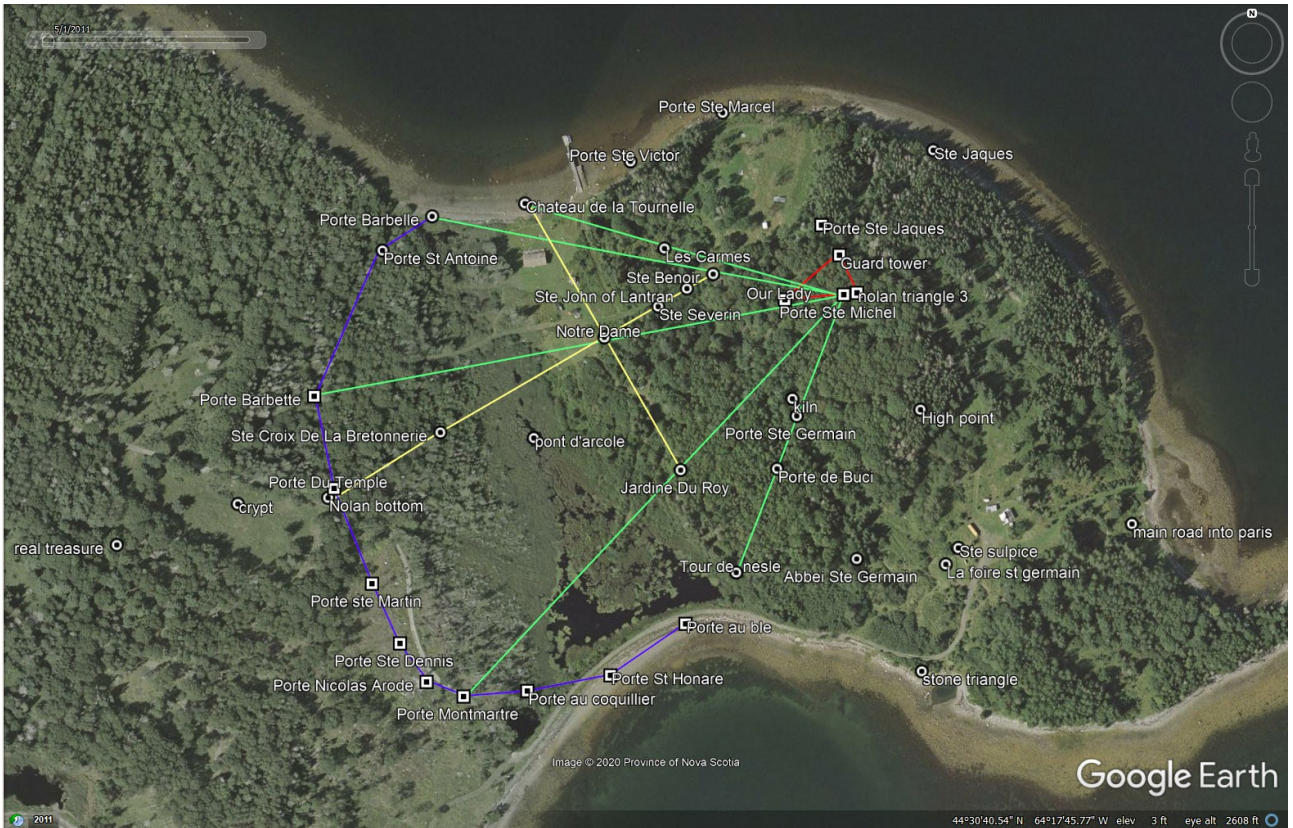




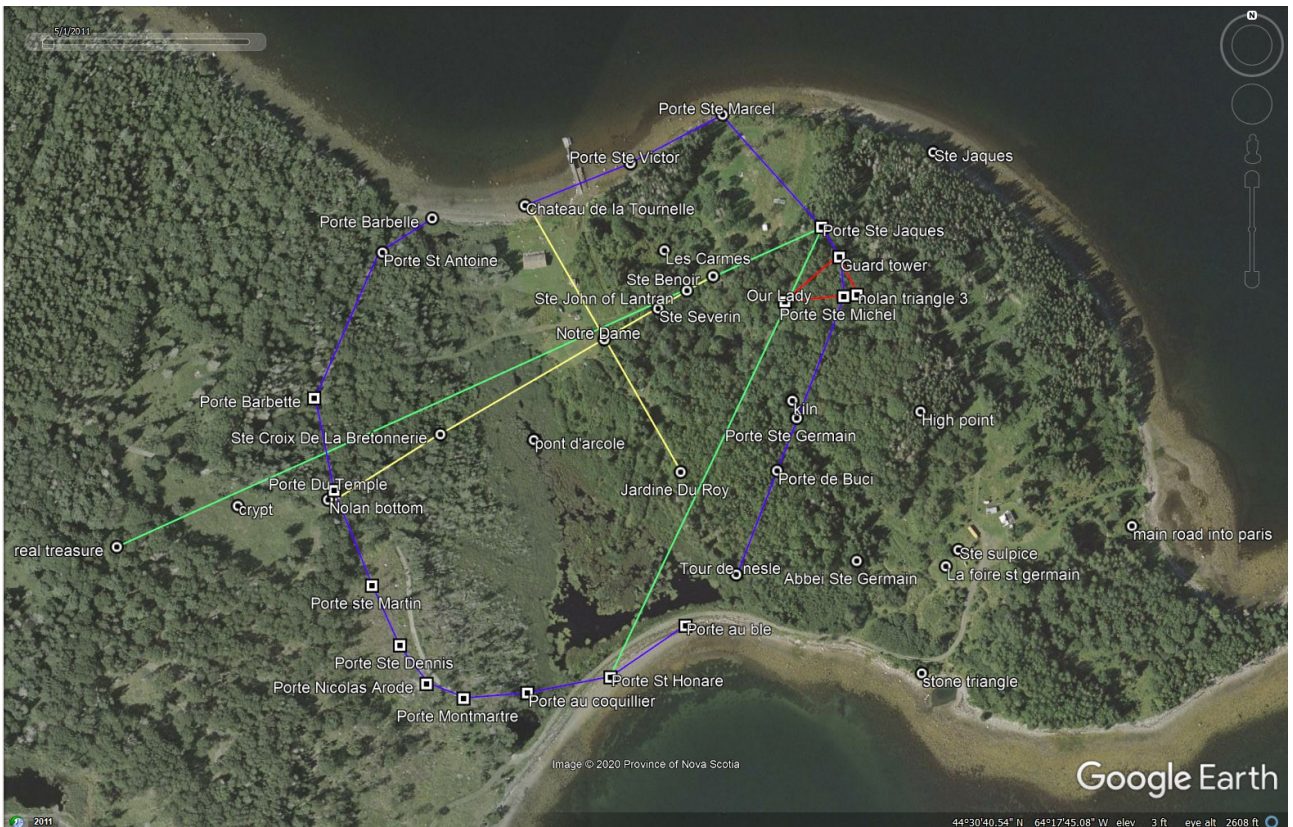
Porte de Buci and Porte Ste Germain. Interestingly enough we can connect Porte Barbette with the drilled stone in Smith's Cove (named main road into Paris).



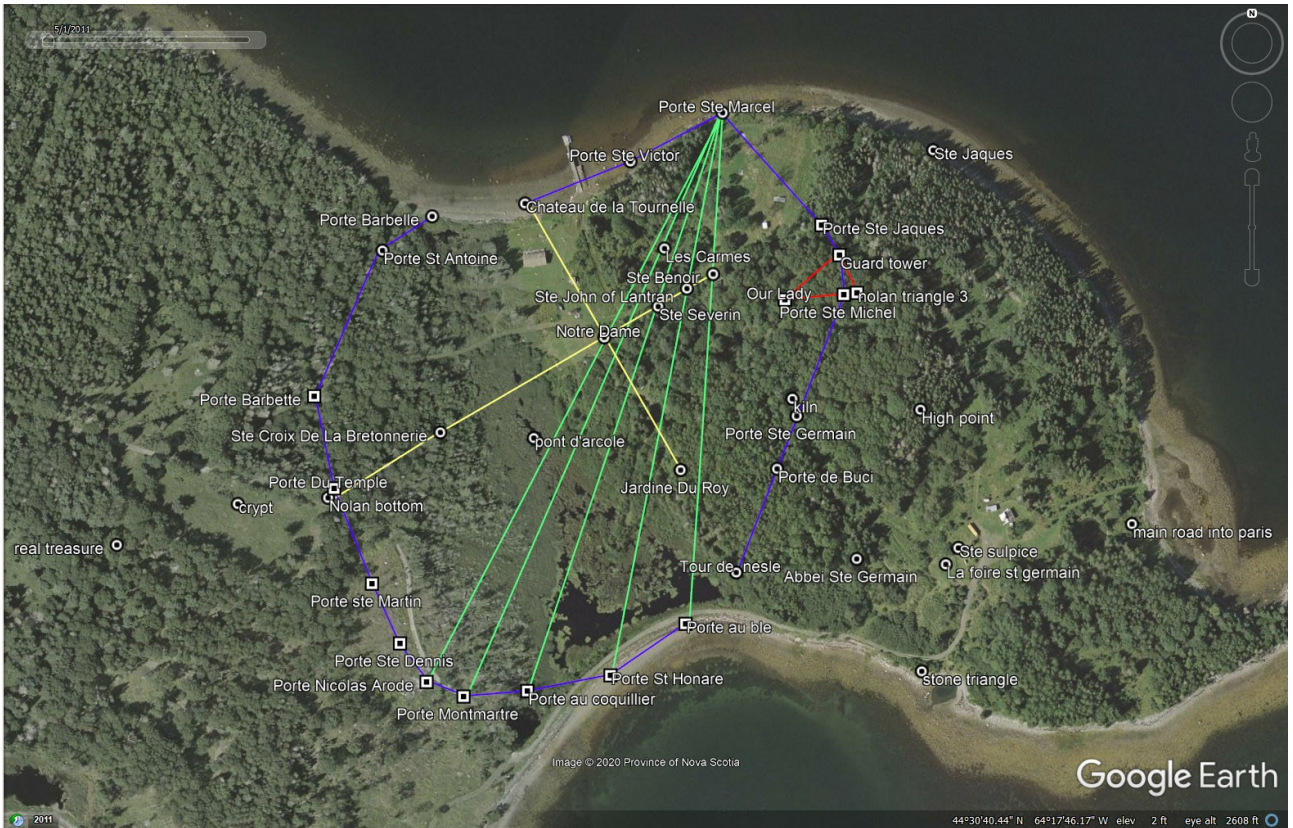




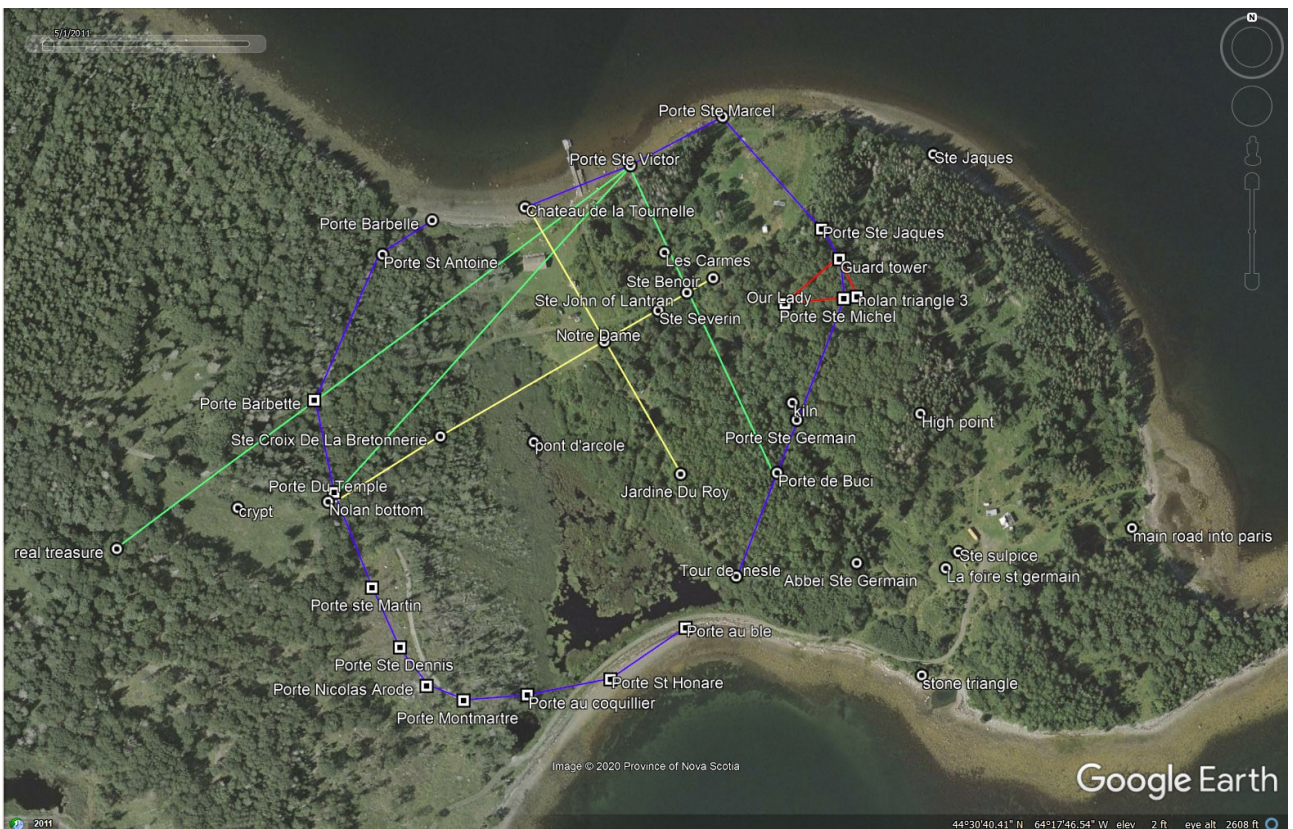
# Porte Ste Michel and Porte Ste Jacques



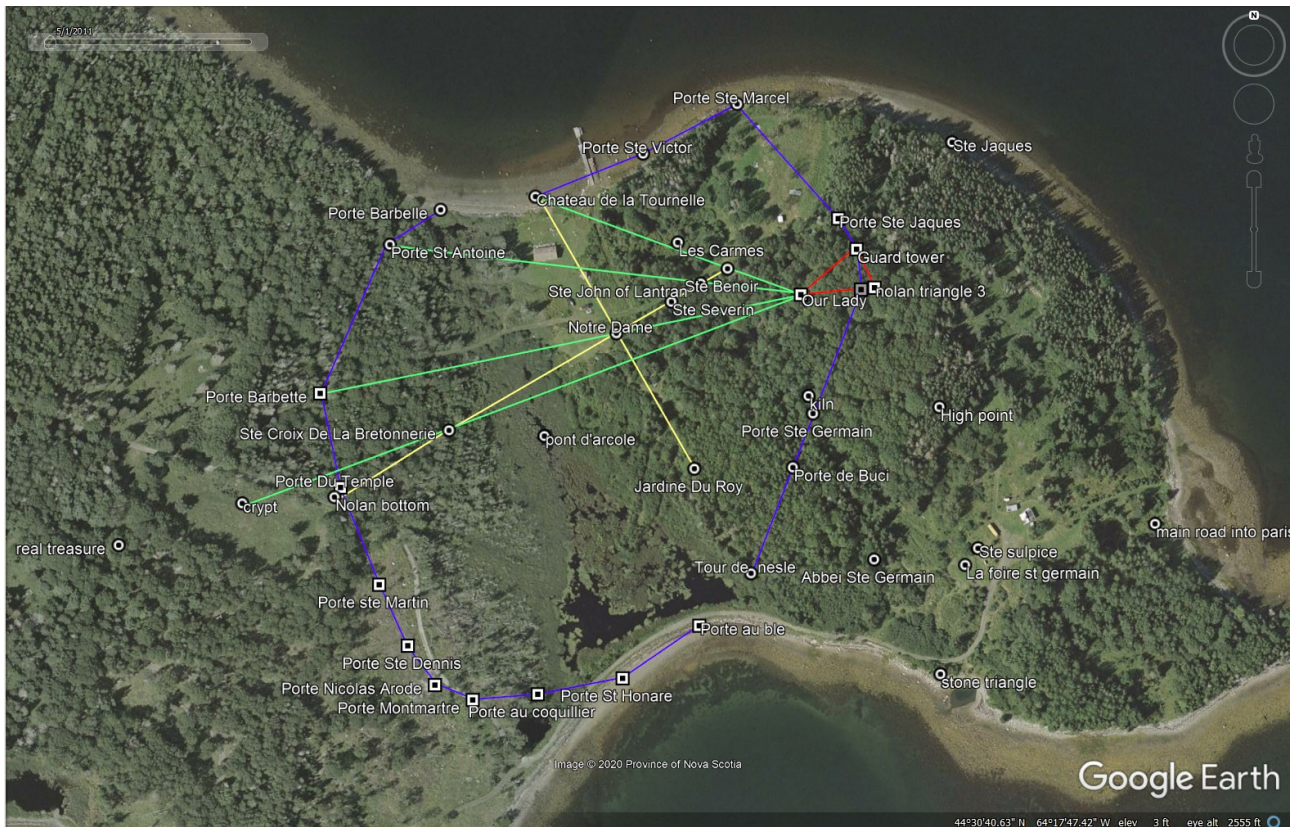




Porte Ste Marcel and Porte Ste Victor







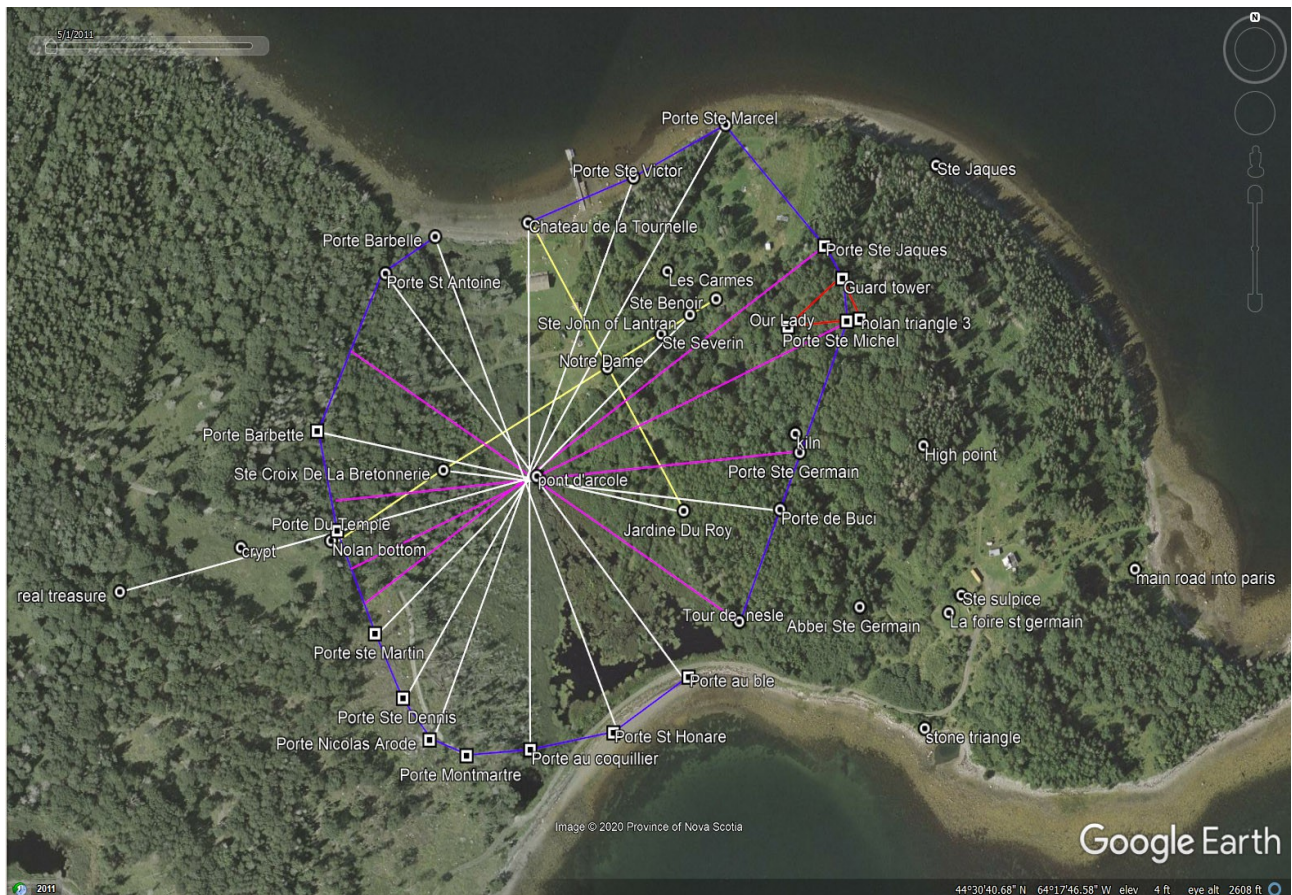
Our Lady, is a church at the point of a triangle of land, some maps show it as gardens and it runs from the church to Porte Ste Michel to the guard tower on the corner of the wall. This guard tower is quite a substantial structure. We therefore suggest the triangle of piled stones that Fred Nolan plotted on his map maps are these points as they line up with locations on our template.

Les Carmes is a crossroads and as we can see it is used many times, right side eye.





## Pont D'Arcole, The Eye of the swamp



I guess now we know why it's there. The purple lines are from existing gates to a place on the opposite side. There are missing gates from our overlay, we considered them to small but our guess is they will be pretty close to where the purple lines hit the wall.

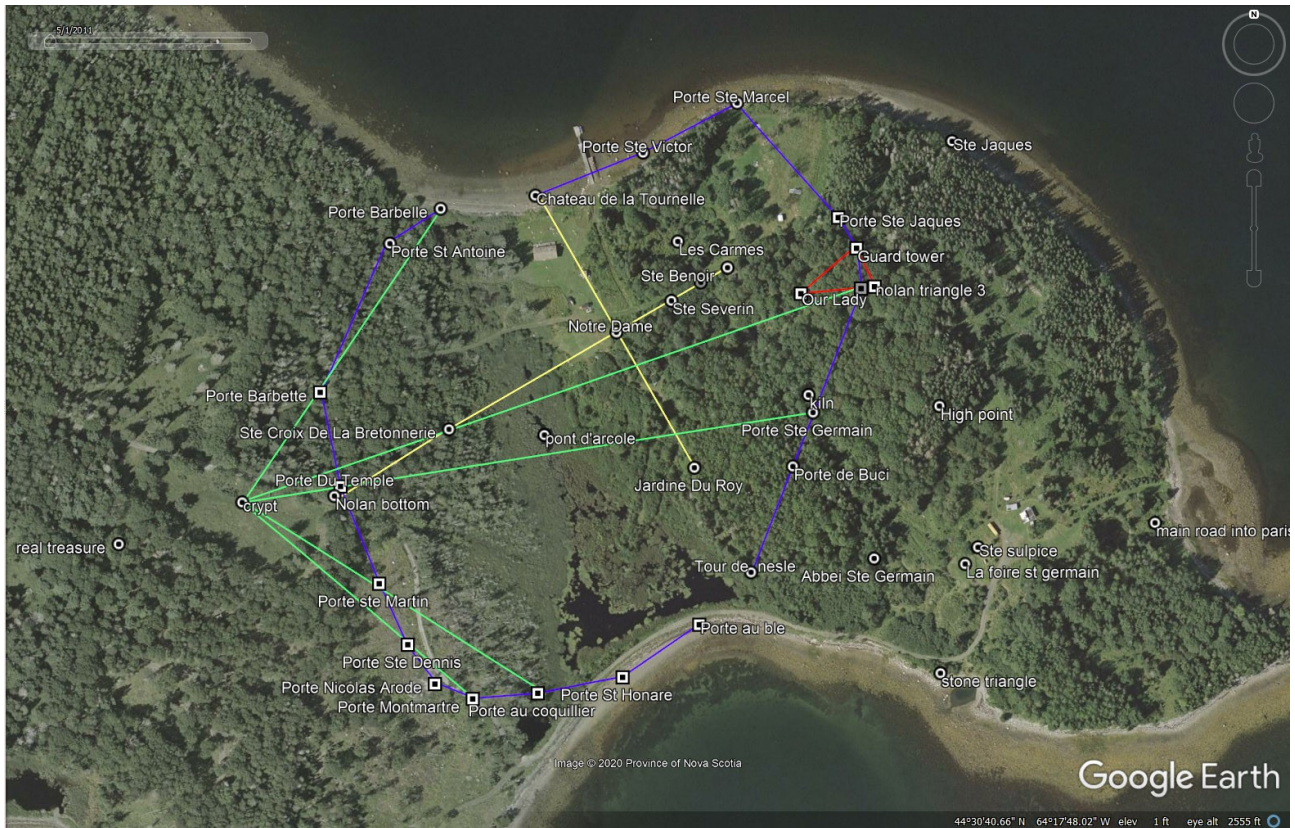
As we said at the beginning. The plan was dreamed up by a genius, perhaps the man who planned the wall of Phillip Augustus is the mastermind behind the plan.

All the above could of course simply be a fluke, all those lines intersecting, all that planning could be a fluke. However, the chances of that happening are about as good as us winning the lottery.



Ok, Now the big ones, the ones you've all been waiting for, please say you have. Just say it once.  
Thanks

## CRYPT

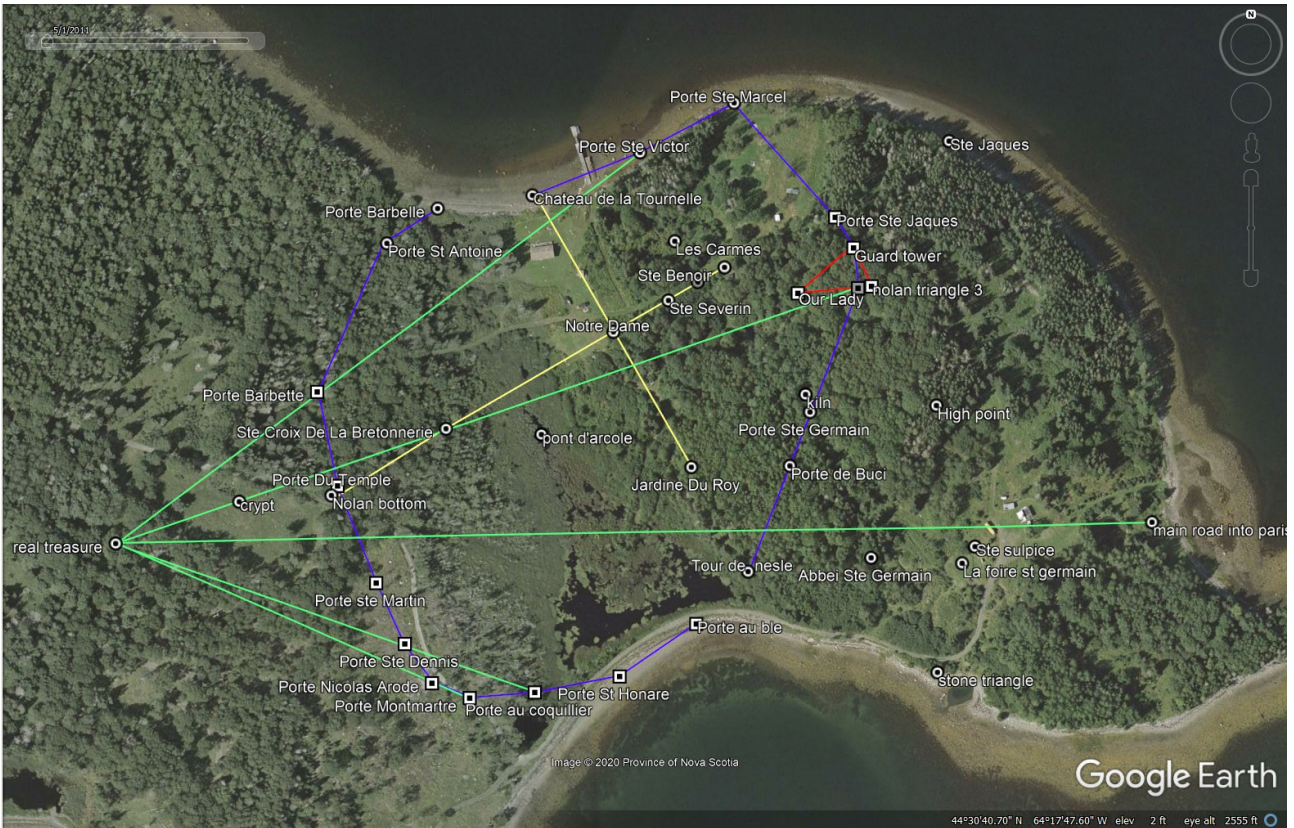


If you remember the Holy Sepulchre picture it shows the stairs leading down to the crypt, this is where we have placed our location. It also co-coincides with the Grosse Tour in the Templar fortress. Initially we missed this and had the Holy Sepulchre arranged 180 degrees. It never really lined up but we pushed ahead with another theory involving the churches on the right bank of the Seine river. This led us to conclude the treasure was buried north west of the money pit. We sent the theory to Hammerson Peters and he asked what was the connection between the churches. Well they could all be seen from Notre Dame but that was about it. It was then that I (Steve) rotated the Holy Sepulchre and everything fell into place. I guess the moral of the story is, never be so pig headed you can't admit your wrong, and we were certainly wrong. Why did I place the Holy Sepulchre wrong in the first instance, Google Earth. I simply looked at Paris with north up and ploughed on regardless.



TREASURE

Once again this is placed at the top of the stairs. Looking at the Holy Sepulchre it would appear there are 2 levels to the crypt and this may be the saving grace for Rick, Marty and the Gang.



Even though I tried not to involve the extension in the plan it wouldn't lie down. The line from the drilled rock in Smith's Cove to the treasure is 269 degrees, close enough to due west. Chances of that happening are pretty slim, another fluke. As my brother often says, "A line crossing 3 points could be fluke, a line crossing 4 points is by design" So the line Ste Michel, Ste Croix de la Bretonnerie, crypt, treasure, maybe a fluke or more likely by design.

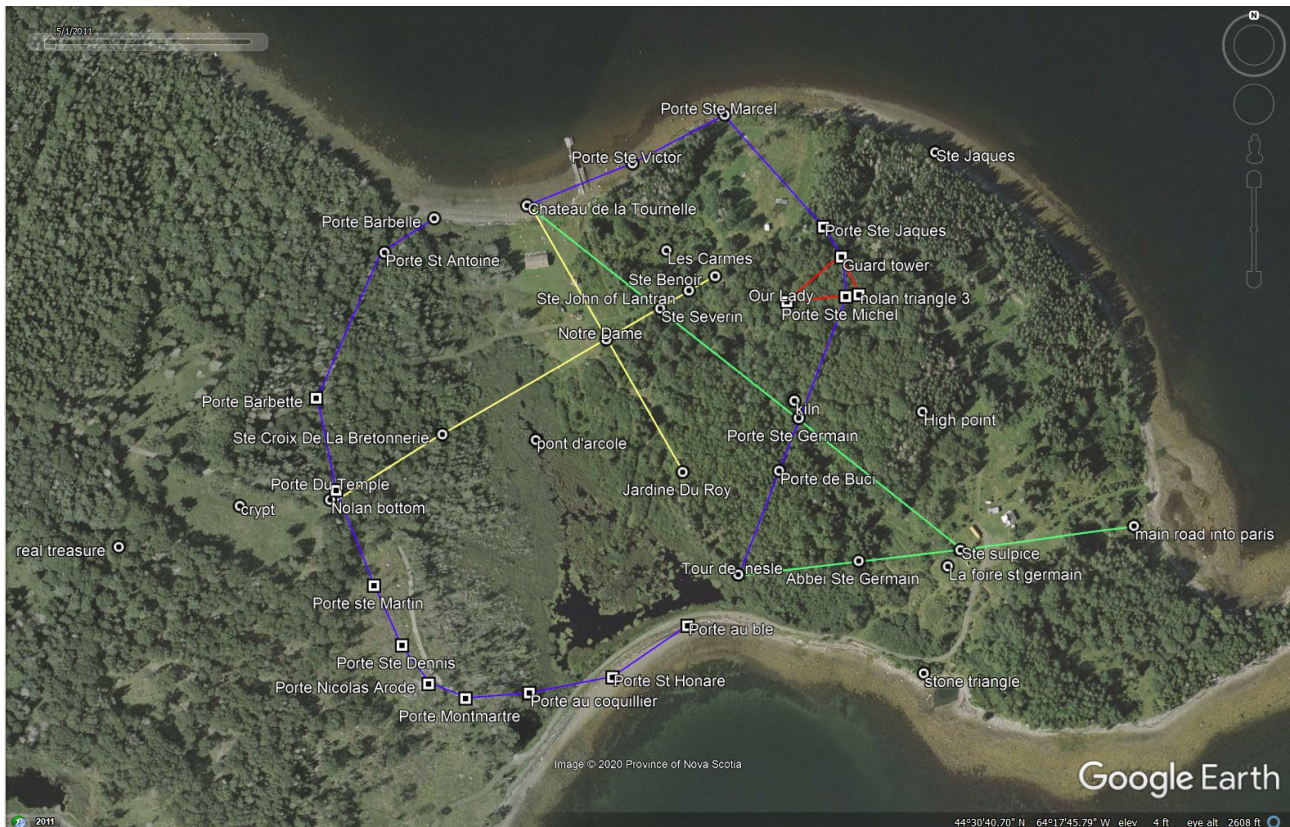
So why did we say, “may be the saving grace”.

To answer this we need to look at 4 men, all connected to Oak Island. Lets face it, Oak Island doesn't have a lot going for it to make you rich apart from one thing.....TREASURE. So lets look at the men in the frame.

Samual Ball, Donald MacInnes, Anthony Vaughn and John Smith. All these men lived on Oak Island at the end of the 18<sup>th</sup> century. They all seemed to have riches beyond what Oak Island could provide. So did these men discover some of the treasure. The Crypt, entrance to the first level, lies on the border of land owned by Ball and MacInnis. It would seem logical to us that the Templar's would leave a small treasure in the Crypt area so if it was found it would deter any further exploration of the main treasure fault, which is 300ft away. Perhaps they found a small cache left by another party all together, somewhere else on the island. The purpose of this theory is to point to the real treasure locations so we will leave this discussion to others.



Well, we've put it off long enough so let's discuss the extension, better known as the money pit.

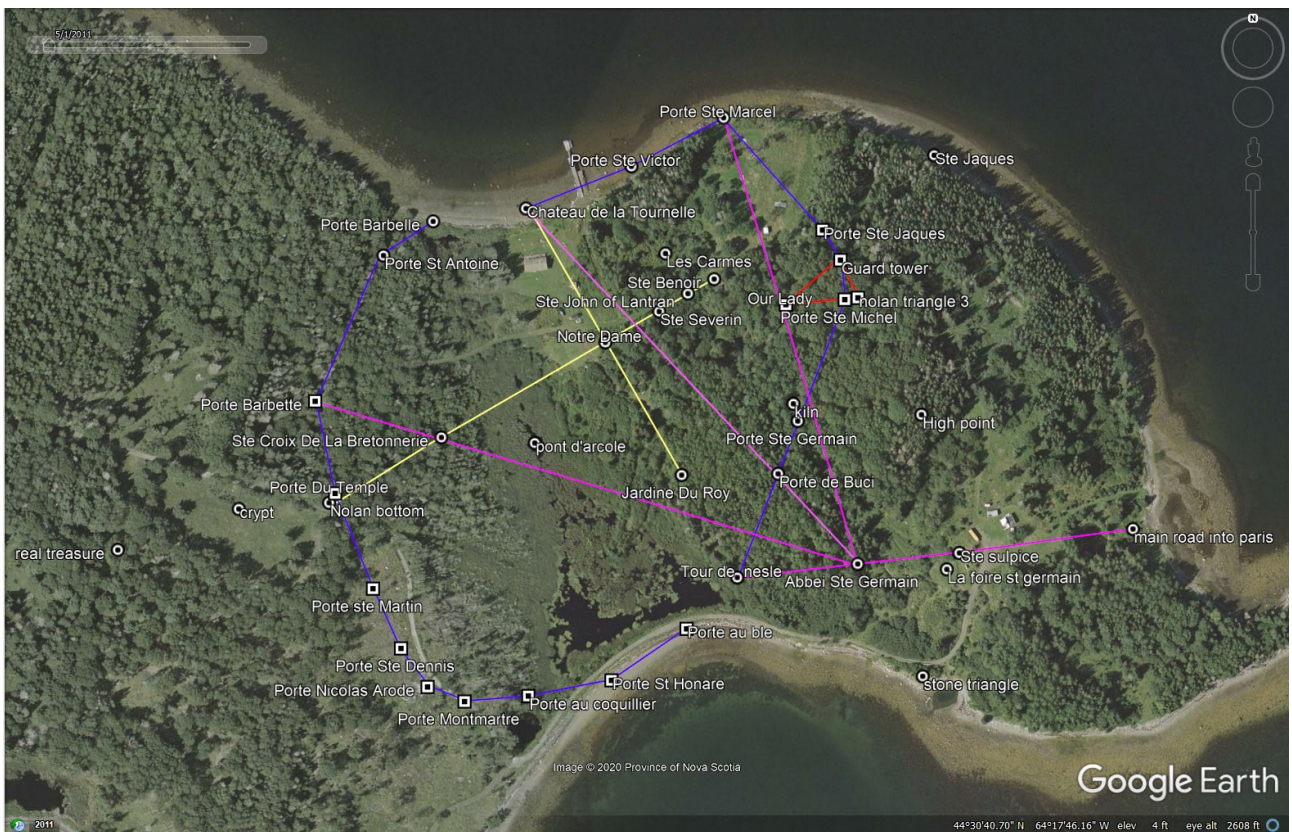


Ste Sulpice. See nothing happens so it must be fake, well that's the end of that. Not so fast big bro, there's more. Ste Sulpice aligns with Porte St Germain, Ste Severin, and Château de la Tournelle. Its also on a line from main road, to Tour de Nesle and through Abbey Ste Germain. Pure fluke my brother would say.

Let's build the case some more.



Here's how Abbey St Germain fits into the plan. Yeah but it's err well, I know, another fluke.



Ok what about from the main road





or the stone triangle



Another fluke of nature

Perhaps the money pit might help





Ok, smart a\*\*e, how does it fit the master plan.

The extension is a misdirection, we Templars are like a magician, we only let you see what we want you to see. Look over here I'm waving my hand, it's the opposite to where you should be looking.

There is also another situation that might fit the bill and one that we fell headlong into. Sure we knew about some of the gates and the cross but we didn't know about all the gates and the Holy Sepulchre so we built the extension using what the the master builders had left behind.

OF COURSE ITS ALL JUST A THEORY UNTIL SOMEONE FINDS SOMETHING TO PROVE IT OTHERWISE.

Before you go one final thought. The Templars or their descendents seem to include pentagrams in their churches, Santa Maria Olival being a very good example. So, we have a Templar chuch on Oak Island but do we have a pentagram ?. Of course we do. The pentagram being included in Templar churches seems to have most prominence in Portugal where the Order of Christ succeeded the Templars, think Templars Mk2. Does this mean our Templar builders were infact from the Order of Christ? Is the pentagram the final clue as to who built the Oak Island mystery. We do have one point that is unidentified, to the left of Porte Du Temple. Despite watching numerous aerial videos we have been unable to see this area devoid of tree cover so only the guys on the ground can help us with this one. Now we need the why !



So just WHAT are the guys looking for !!! Gold and Silver, Ark of the Covenant, Holy Grail or perhaps something that was far more valuable to the Templars !!!

If our theory is correct the final clue would be to descend through the Crypt, pass through the chapel of St Helena and into its lowest room. In a small alcove you will find the ultimate treasure....The Cross of Jesus.....You wasn't expecting that, admit it !



Thanks for reading,

Dave and Steve Cozens

Thanks go to

Google maps, the authors of the various early Paris maps, Holy Sepulchre pics and Nolan treasure map.

A Special Note...Fred Nolan deserves all the credit, he found the clues, we simply worked them out.

OK exam time...We did say the tasty bits was at the end, you were not paying attention

But sir, I hate exams...No excuse, pencils at the ready!!!!

Question 1. What's the name of the trick ? What they on about, trick ? I don't get it

Question 2. Who are you ? Hang on, I'm still thinking about question 1

Question 3. Why is Nolan's cross so big ?

Question 4. Why is Nolan's triangle so small ?

Question 5. How many treasures are buried on the island ? Think carefully

Question 6. What's the name of the trick ?

Question 7. Why did you bury your valuables ?

Question 8. Who else could you be ?

Question 9. Where's the missing stones ? Ste Benoir, Ste John

Question 10. Why so many pieces to Nolan's triangle

Your 10 mins start now .....

Dum de Dum de Dum....looks at watch.....looks at watch again..... paces around the tables, shakes head, Smith you wasn't paying attention, smiles, good lad Jones, at least you were.....looks at watch.....

OK, times up....pencil's down, we'll let you mark your own work

1. Misdirection, page 1
2. Templars, master magicians
3. To look natural, unless you know the plan, Misdirection
4. To be obvious, unless you know the plan, Misdirection
5. 1,2, 3 or none



6. Misdirection
7. They are too valuable
8. British, French, Captain Kidd or just plain no one
9. They are missing so who knows, except we do, Misdirection
10. Misdirection

So lets go through them

1. We (answer 2) need know where to dig for our valuables but we don't want anyone else to know so we act like magicians and employ, Misdirection
2. Obvious
3. Unless you know the plan, large boulders on an island strewn with boulders will look just that, large boulders. A good magician makes you look at the obvious whilst hiding what they are really doing.
4. We need you to think it's really important so lets make it small so you can see all of it and whilst your looking we're doing something else. We are magicians after all.
5. Until something is found then it's the latter. A grand hoax or a master plan
6. You've already asked us that. We know, but it's the most important part. We, Templars, don't want you to know where to go so we leave just enough for us but not enough for you. Like we freely admit, even we fell into this trap. We thought the money pit area was the place to dig, all those lines, must be right, got to be right, it has to be right. Misdirection on a grand scale, the magicians greatest play.
7. We'll come back for them later. We don't really want be carrying all our valuables around with us whilst we explore, never know who we might bump into. Did we ever come back, maybe, maybe not.
8. We could also add, treasure seekers, Rick and Marty, Dave and Steve and who ever is reading this.
9. The missing stones are missing for a very good reason, they didn't put them there. We, Templars, assumed you might figure out it's a cross. So we want you to think it's only a cross and not "our" church, The Holy Sepulchre, the church that means so much to us Templars. We know it should be there, so by leaving it out we know we are in the right place. Grand Misdirection again.
10. Again it's misdirection. We left obvious piles of stones, hey look they are a triangle, of sorts, must be important. Let's look and err, well they don't do a lot really, they are just piles of stones that look like they should mean something. Nope can't work these out so let's move on. Misdirection. We need to use these stone locations with the very large, "hey here we are" boulders to confirm the location of the Crypt.

You still here, we really did do well !!!!!!! and your coffee's way too cold

So how many did you get out of 10. To my shame my brother managed 1



Ok I lied, it was more than a 20 minute read but you were so engrossed it sure seemed like 20 minutes





Seems like it's going to be more than 20 mins plus another 20 mins and perhaps another 20 mins as Part 2 needed to be added to the theory !!! So why Part 2 I hear you ask, you did ask, yeah of course you did, make this old man happy and say you did, great. There's an old saying, “ the proof of the pudding is in the eating”.

It's quite easy to dream up a theory. This goes there and that does this so it must ALL be correct but that doesn't help towards proving a theory. To help the theory we must enjoy some pudding and confirm at least some of it. Part 2 was always going to be a big ask. Many of the locations, building blocks really, are always hidden in the Google Earth images us theorists use like confetti and our theory was no different. We say, “ there's a large stone here, honest there is, just take our word for it”. Well that doesn't wash with me and I doubt it will with you so lets go find them, as I said, the proof is in the eating. So let's eat.

Before we start I must thank Jeremy at Jerrs Aerial Photography, not only for his work but also for his permission to use his material. Without his excellent drone footage we would never have been in a position to write part 2. If your serious about anything Oak Island take a look at his video's, he goes to places the TV shows simply forget. They are the best guided tour of Oak Island. Let's face facts, the chance of getting on to Oak Island are very rare so Jerrs videos are the next best thing. So hop on over to his site, and have a look, give a thumbs up and spread the word. When you have finished part 2 of course.

I will try, and most likely fail, to show you all of the locations we suggested in part 1. Some will be obvious, some will not, some will be “ it looks like that could be it but”.



Without going to the Island and sticking my hand on the location it's always going to be a best guess, no point trying to say otherwise, honesty is the best policy. Some boulders will be really obvious in the photos others will look a bunch of dodgy pixels. These dodgy pixels were arrived at by watching the video's numerous times, spotting the boulder underneath the trees and following that location as the video progressed noting the the trees did move over the boulder and it wasn't just a part of the tree. If you want to verify any location I suggest you watch the video at the time stamp and see for yourself. I also used a set of 4K photos that Jeremy kindly sent to me, this made spotting some locations much easier. Whilst some locations may not look obvious in some of the photos once they are shown in 4K the difference is stark. Some locations were worked out using the positions of clumps of trees or the outlines of where they used to be from the winter maps provided by Google. This proved very successful for the interior locations as the evergreen trees shapes could be matched with the photos.

## NOLAN'S CROSS

We all know about Nolan's Cross and it's dimensions, not because we can see all of it but because someone else has already measured it. We know where it should be and can guess with some accuracy at where it is. Apart from 2 stones, we never actually see it. So let's go find it all. I'll stick with our naming from Part 1, at least that will make you read part 1.

So this is what we normally see, either from Google or photo's etc. Not very revealing is it, it's sort of underneath all that tree canopy.





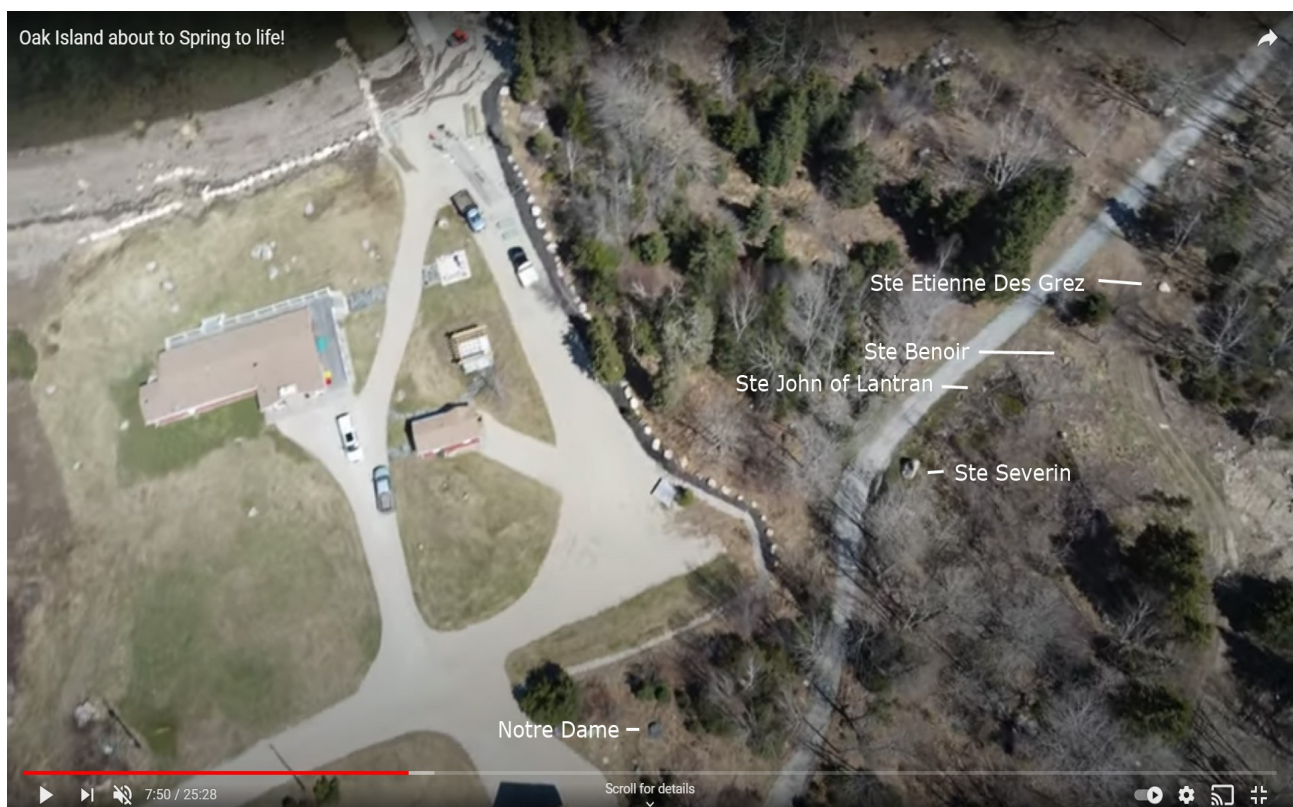
So lets take a better look, courtesy of, you guessed it, Jeremy.

Château de la Tournelle. Easy one to start with, always visible, even on Google Earth. Big sticky out boulder on the beach (hopefully we got it right above, if not it's there somewhere).

As you can see above most are covered under the tree canopy as usual. Notre Dame is visible from the opposite direction, but it does require some eye pinching. St Croix and Nolan bottom have so far eluded us as they always seem to be covered, even in winter, unless you know someone with a drone.

So lets show you the others taking the short top section of the cross first.

I have grouped them all together on a single photo. Notre Dame is not as big and as obvious as you may think. Ste Severin is large and obvious but has been moved in the past to check if the treasure was buried underneath it. Now on to the extras we have added. Ste John of Lantran also seems to have been moved, probably as part of the clearing, it looks small in this photo but in the next you'll see its very obvious. Ste Benoir and Ste Étienne seem to be in their correct places. Ste Étienne was added as of the result of the granddaughter peering over my shoulder whilst I was explaining the alignment to my brother. I was simply using that boulder to draw a line to aid my brother with his observations. I had previously explained the church naming so she asked what church that boulder was. I said it wasn't part of things as I was just using it for alignment, she replied, "its in a dead straight line so it should be". Not being able to fault her logic I revisited the old maps and sure enough Ste Étienne des Grez fitted the bill so it is now included.





Here is Ste John from another vid, little more obvious now.



On to the other leg of the horizontal cross. Jardine Du Roy

This is one of those always under canopy but here it is in all its glory.





Now the tricky ones, the 2 boulders of the long vertical leg. Ste Croix de la Bretonnerie and Nolan bottom stone. Even during a winter scene these are quite difficult to identify and it's only when the drone flies in a certain direction that they pop out of their hiding places. Hopefully I have got them right as there is nothing to confirm their alignment.



Nolan bottom and Porte Du Temple (1) could also be interchanged depending on alignment. From our theory they are pretty close together and depending on the accuracy of the 1380 map Porte Du Temple could be either of them. More accuracy needed so we did.

So there you have it, all the points of Nolan's Cross plus a few extra's we have added.

We decided to be more accurate with our wall locations ( lats and longs at the end of the file) and used a 138MB file of the 1380 map. This was scaled to match Tournelle and Nesle on Oak Island but we needed the width to be worked out,so we matched it to the actual gates in Paris. It is surprisingly very accurate within the area that covers the Phillip Augustus wall, areas outside this started to loose there accuracy and at the edges it was quite pronounced and pretty useless. The length to width ratio of this map over Paris was 1.23. We applied this to Oak Island using this ratio. At this ratio most of the south west and north west gates were in marsh land. We decided the chance of anyone hauling boulders into marsh land were pretty slim so we rescaled



the width to fit the temple gate to Nolan's bottom stone. This produced a ratio of 1.245 and more importantly, no wet feet. As we would say, good enough for government work. Please feel free to check any of our work on this matter, the gates in Paris are fairly obvious on the southern side but on the northern side take some finding. We also added 4 extra gates just for fun to see if our theory would hold up on these too. We omitted these gates in the first part as it was getting to the point of being overloaded. So there are now 2 Temple gates, one by Nolan bottom stone and one hiding in the woods. Yes of course we found it.

So let's crack on with the Paris Wall and see how many of those we can account for. Before we do I'll explain the addition of the extra gate, Porte Papale. This was spotted by my Jedi Master (also known as granddaughter), She pointed to the map of gate locations I was using and asked why I had omitted this gate. To be honest, I didn't even notice it. There is a road leading towards it but no gap in the wall. I'm assuming this gap was omitted by the map maker and the gate leads to the Abbeie Ste Genevieve, possibly for foot passage only. The boulder depicting its location is not there but it does fit in with the overall plan as I will demonstrate shortly. There is a very large boulder on the edge of the cleared area so perhaps this is the locating boulder that has been moved. More on this shortly.

Starting in a clockwise direction

Porte Ste Victor and Les Carmes

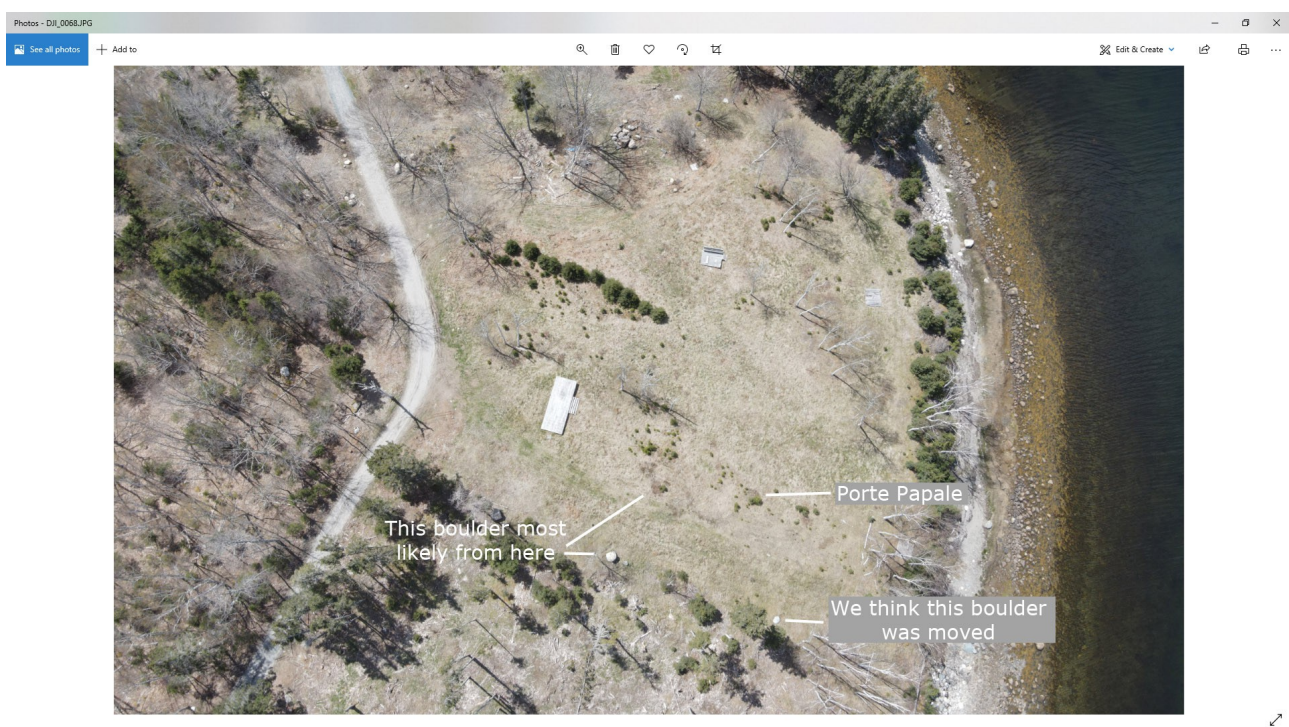




Porte Ste Marcel. Somewhat difficult to see as its hiding underneath the tree and in shadow. We did think of the large and obvious boulder on the sea shore but it's not in the correct location.



Porte Papale, Good chance the boulders have been moved to make the clearing, We favour the smaller one as its comes from the correct location.



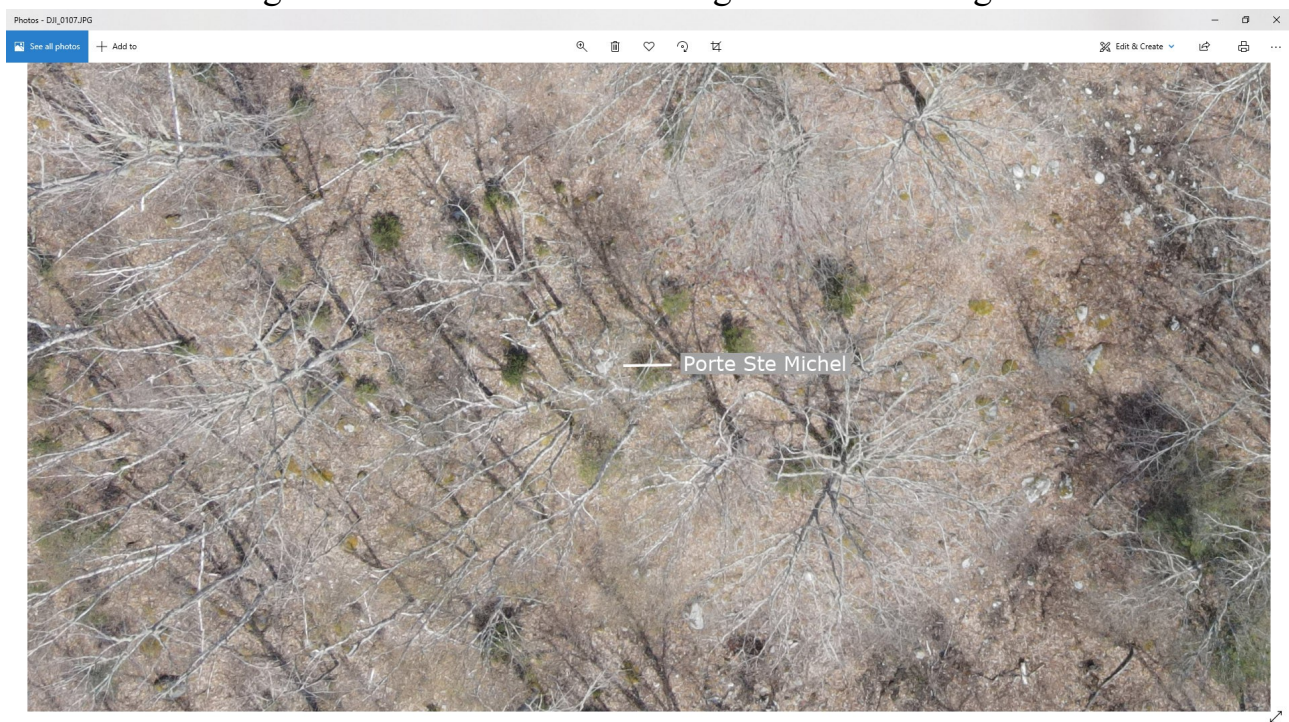


## Ste Jacques, Guard Tower and Ste Michel.



These were located using a tree pattern method. As an example from the image above we can see the evergreen trees on the left of the road form a triangle, thinning to its edges. Using the winter Google map we could locate where the guard tower should be in relation to this pattern and some careful examination of the photo revealed its location, this was cross checked with a video to ensure it was a boulder and not simply a coloured patch of dirt. Ste Jacques was examined from 3 different photos.

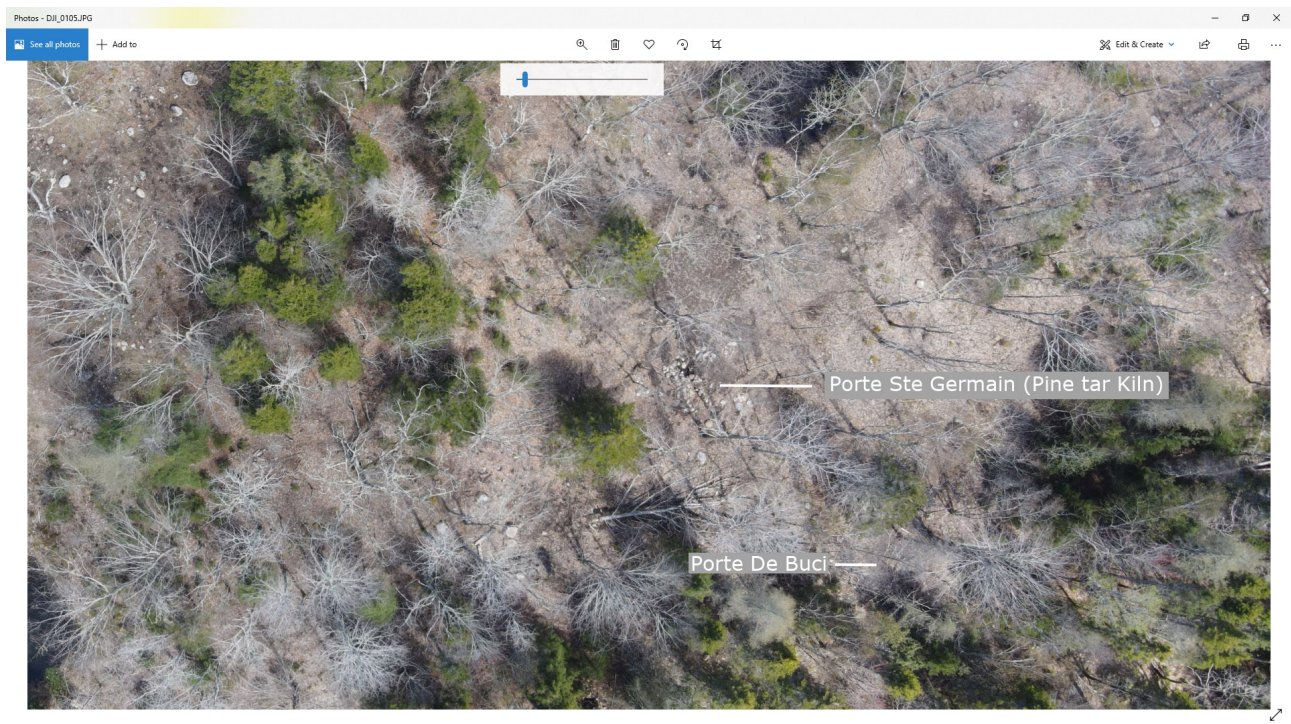
Ste Michel looks like it could be anywhere from the photo below but the same method was used to locate it. A line of evergreens very usefully pointed in the correct direction. The larger stone to the bottom once again failed the alignment test.





Whilst some of these stones may appear small we have to remember they are only marker or alignment stones.

## Porte Ste Germain and Porte De Buci



Trying to locate these 2 stones was pretty much like a needle in a haystack. The only way to be really sure is to walk the ground with a GPS and give them a kick. These are best guess from watching numerous videos, drawing lines and some photo manipulation over Google Earth. Although Jeremy did a top down survey for us in his last video (Oak Island about to spring to life) the distortion from the lens made it difficult to produce a full top down from Tour de Nesle to the Porte Ste Michel area. We then got access to Jeremy's 4K photos and this made it so much easier. It turned out that Ste Germain was very near the pine tar kiln, a short heavy stones throw. As we speculated in Part 1 the survey stone could well have been used as fill but it would have come from the immediate local area.

Talking of Tour de Nesle here it is in all its glory. This one has mostly been hidden by undergrowth and only became really visible when the area was cleared during the stone road research.





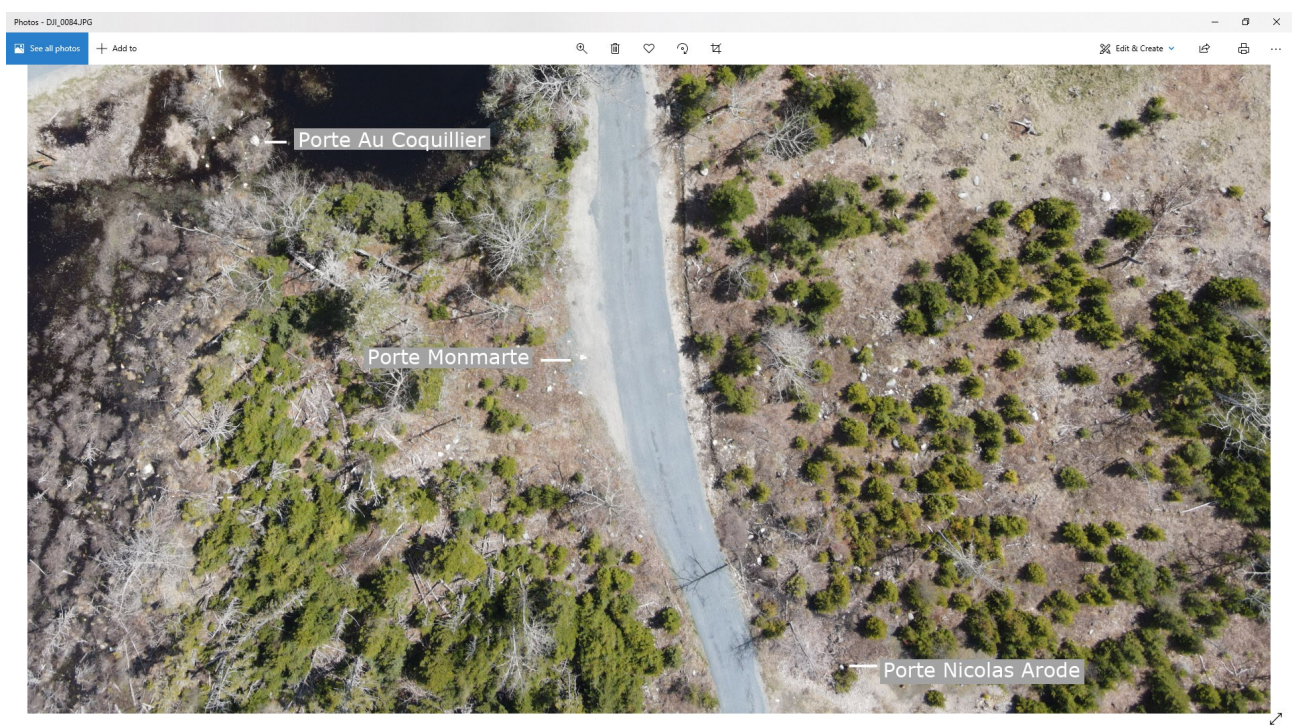
The next 2, Porte au Ble and Porte Ste Honare are quite possibly missing. We do have a photo shot of what could be Porte Ste Honare but the evidence is some what weak. This area we believe was either a man made sea wall in the distant past or a natural spit of land attached to the west island. There is a large boulder on the beach at the location of Ste Honare, this could be original or just pure co-incidence being a boulder that has rolled down from the present day road/wall. I would guess the chances of that large a boulder moving on it's own are quite remote as the gradient is quite shallow.

Whether it's old or new is up to you to decide so here it is.





Porte Au Coquillier. From our original map this was slightly further away from the large pond at the corner of the swamp. Once the more accurate survey was applied it turned out to be the very obvious white stone.



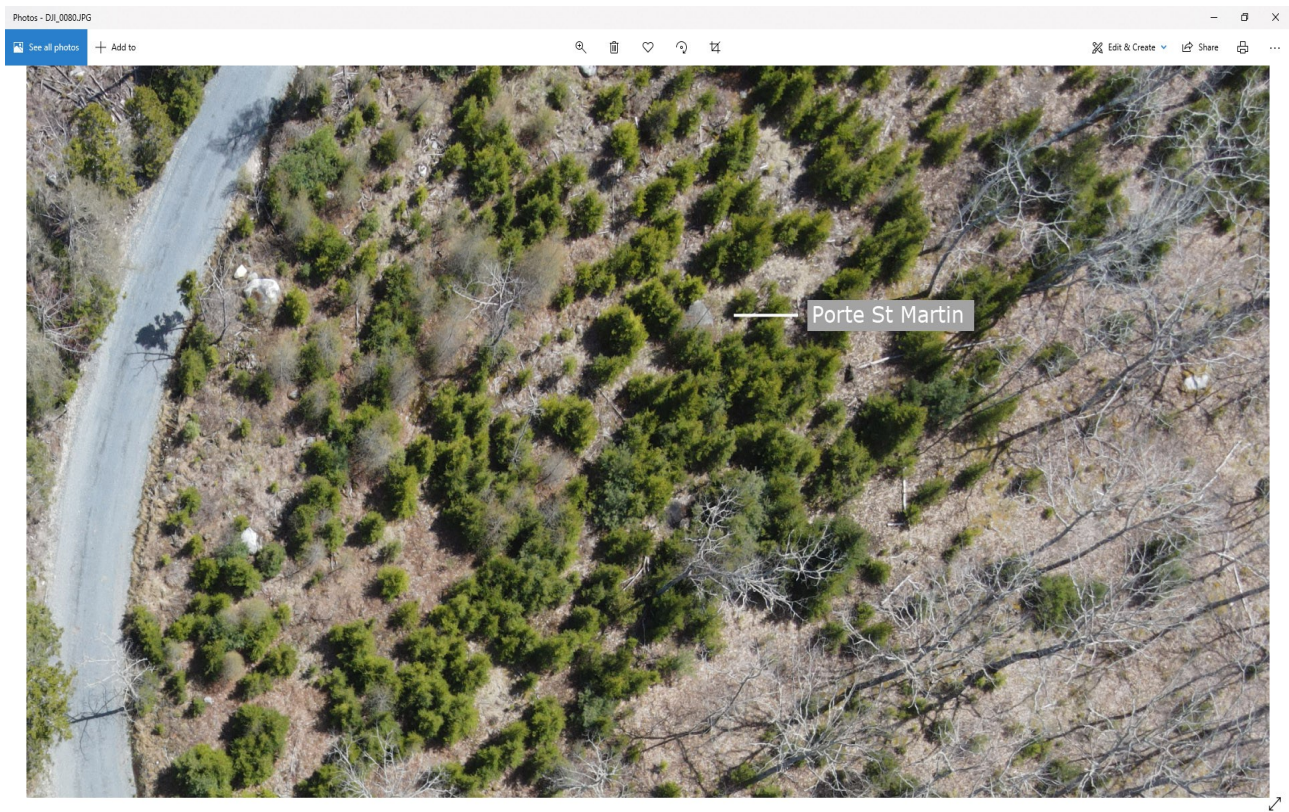
Porte Montmartre, Nicolas Arode, Ste Dennis and Ste Martin. A series of boulders that are quite easily identified on Google Earth 5/1/2011. Identifying them from aerial shots are a little more difficult as small trees have a habit of hiding them from one direction but not the opposite direction. Having said that, Porte St Martin still remains mostly hidden from all directions. I eventually managed to catch a small glimpse of it



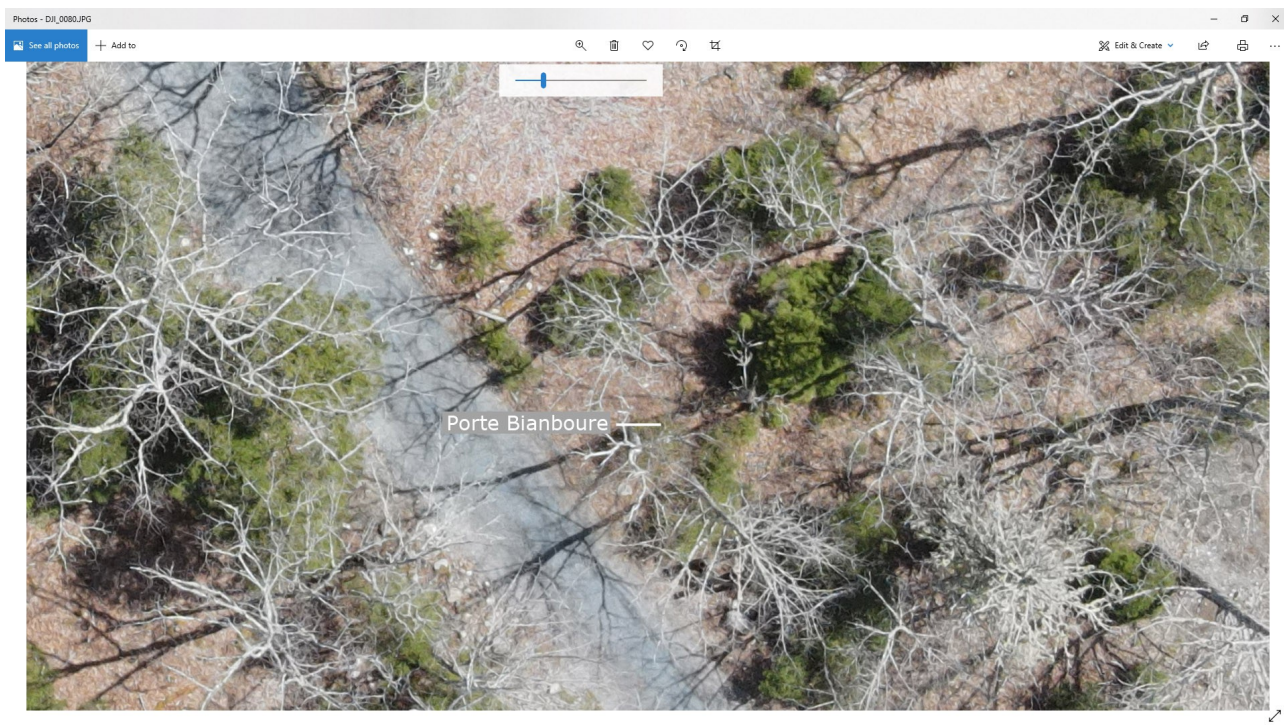
whilst knowing where it should be. It makes a triangle with 2 white boulders which are close to the road and is on the edge of a tree line. There is a boulder that really stands out fairly close to the location but I'm not convinced that is the correct one. .



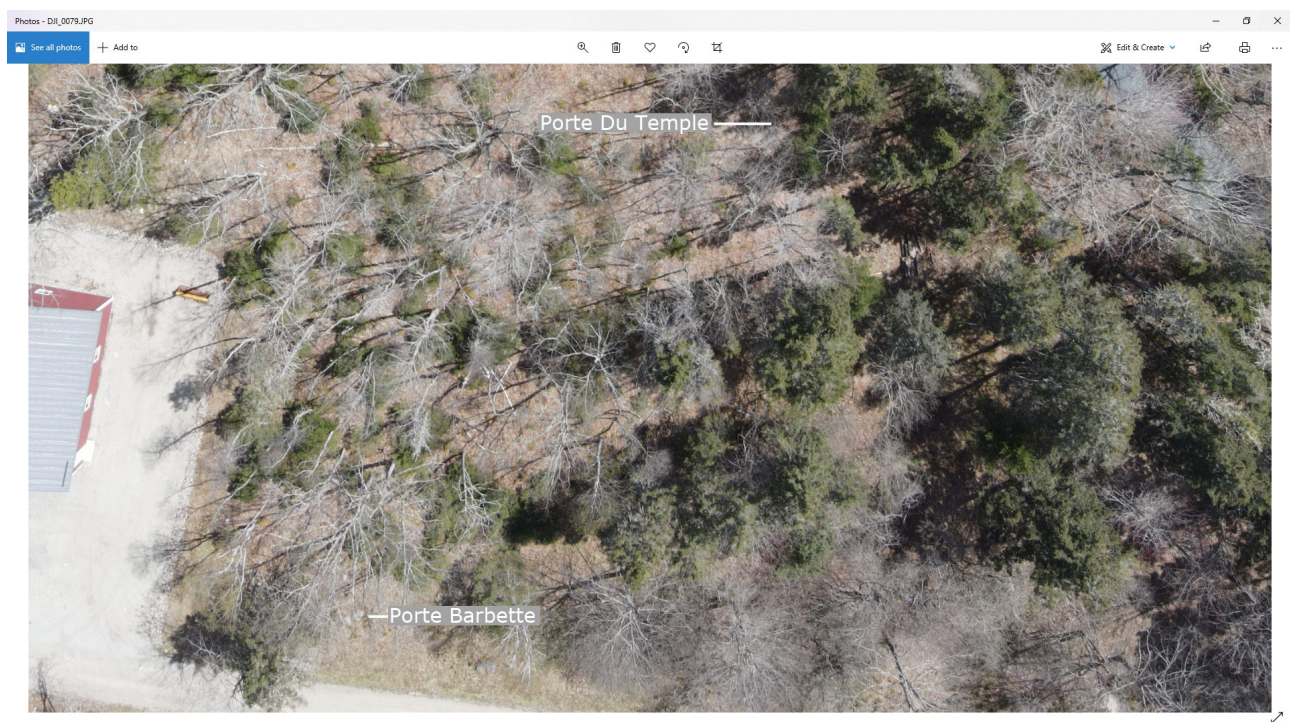
Porte Ste Martin, makes that triangle shape with the 2 road stones and is towards the edge of the evergreens. The grey trees are more readily seen in the google earth views as they are then in full leaf





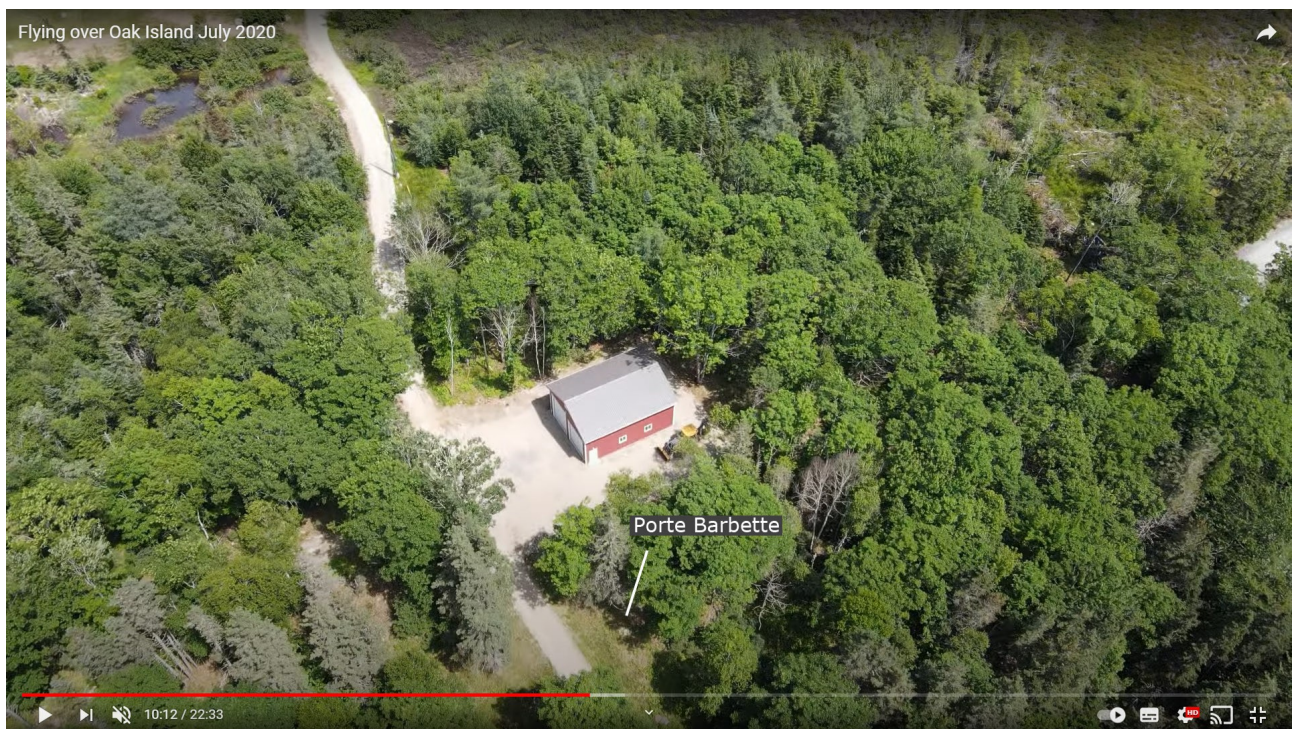


For Porte Bianborne I used the tried and tested tree line method from the winter google map. Once again it was checked from different photos and the vids. Jeremy's top down photo's didn't help very much in the area as the stones have a habit of hiding underneath the trees and it requires a more slanted look to tease them out. Porte Du Temple (1) has already been identified when discussing Nolan's cross so before I skip to Porte Barbette I best show Porte Du Temple (2). Quite difficult to find but using the tree line method and various photos I hope I managed to find it. Why 2 temple gates, good question and not something I can answer with certainty. In Paris they are close together and both lead to the Templar's temple though Temple (1) leads to the front door.

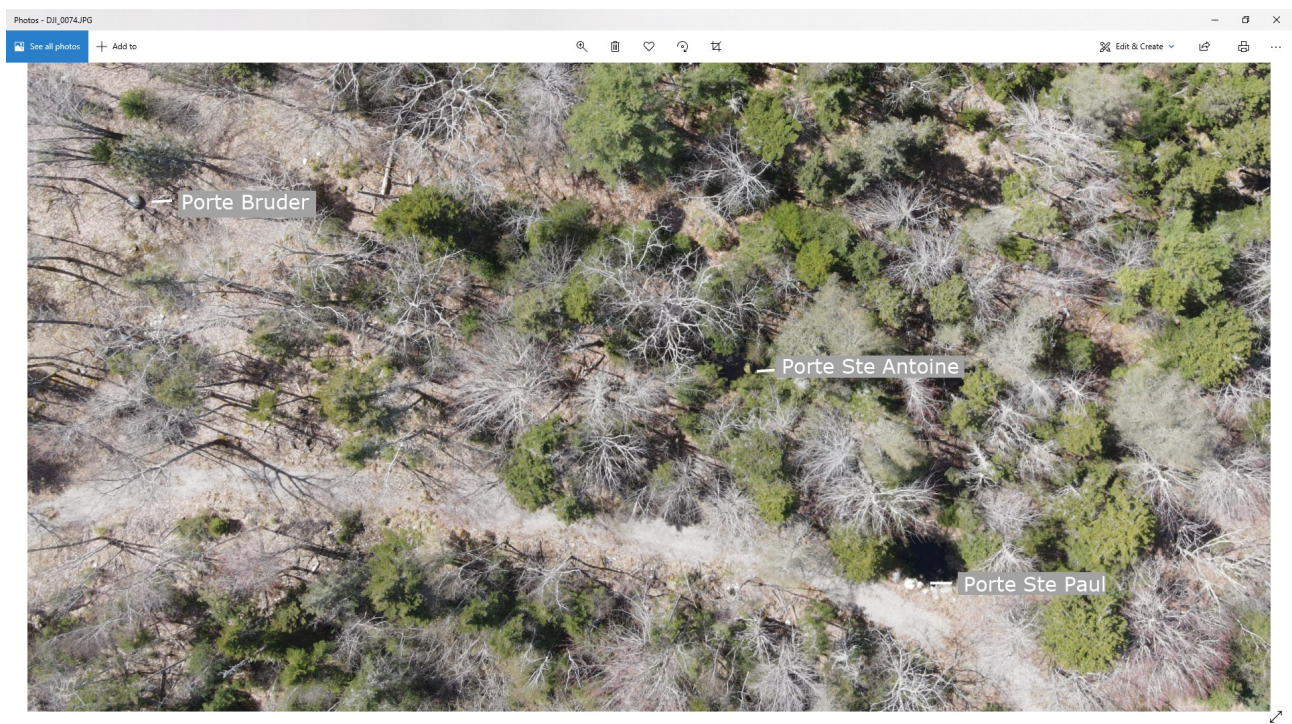




Porte Barbette. Can be seen in the photo above but is very obvious in the one below

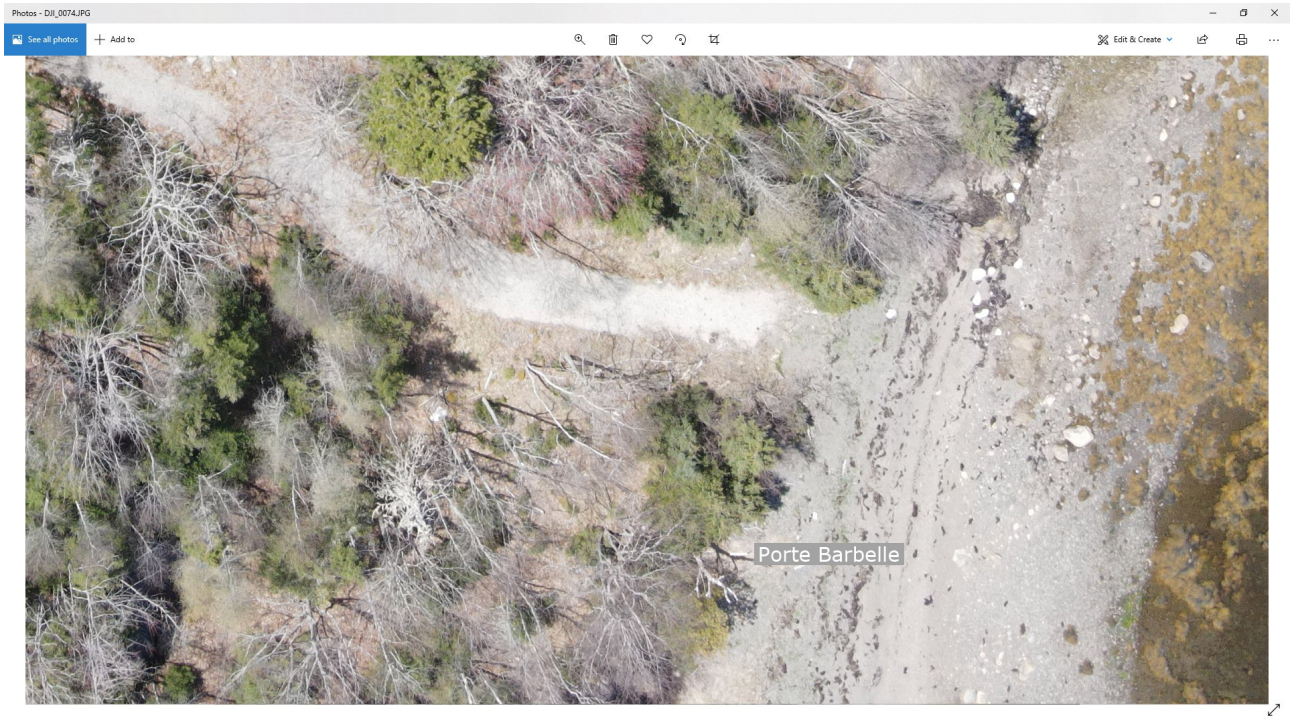


Moving on to the last 4 in the Paris Wall, Porte Bruder, Porte Ste Antoine, Porte Ste Paul and Porte Barbelle. Bruder and Paul were added as part of the fun challenge and not surprisingly were just where they should be.





Porte Barbelle. This one hides under the tree. Again the large stones on the beach look very tempting but they are not in the correct location so were ignored.



Now on to the extras.

Crypt. First Entrance stairs and leads to real treasure stairs. This may be a slightly incorrect position as there has been clearing work undertaken in this area. We feel it should be a little more into the clearing. Nothing more than a “gimmie” treasure and quite possibly the one found by Samuel Ball and associates.

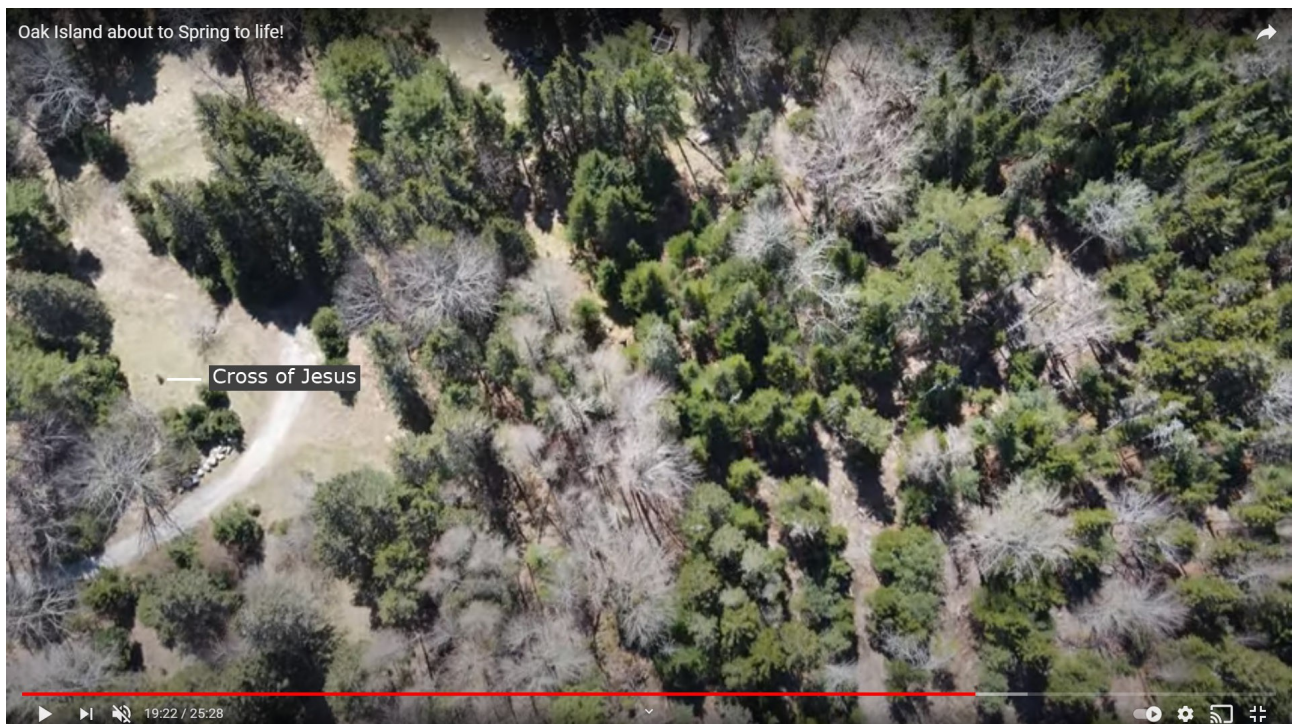




Real Treasure. The lower entrance stairs to the real treasure chamber. This was a very difficult one to find and is only really seen in the video as in a still it just seems to disappear. Guess that's what the builders wanted to happen.



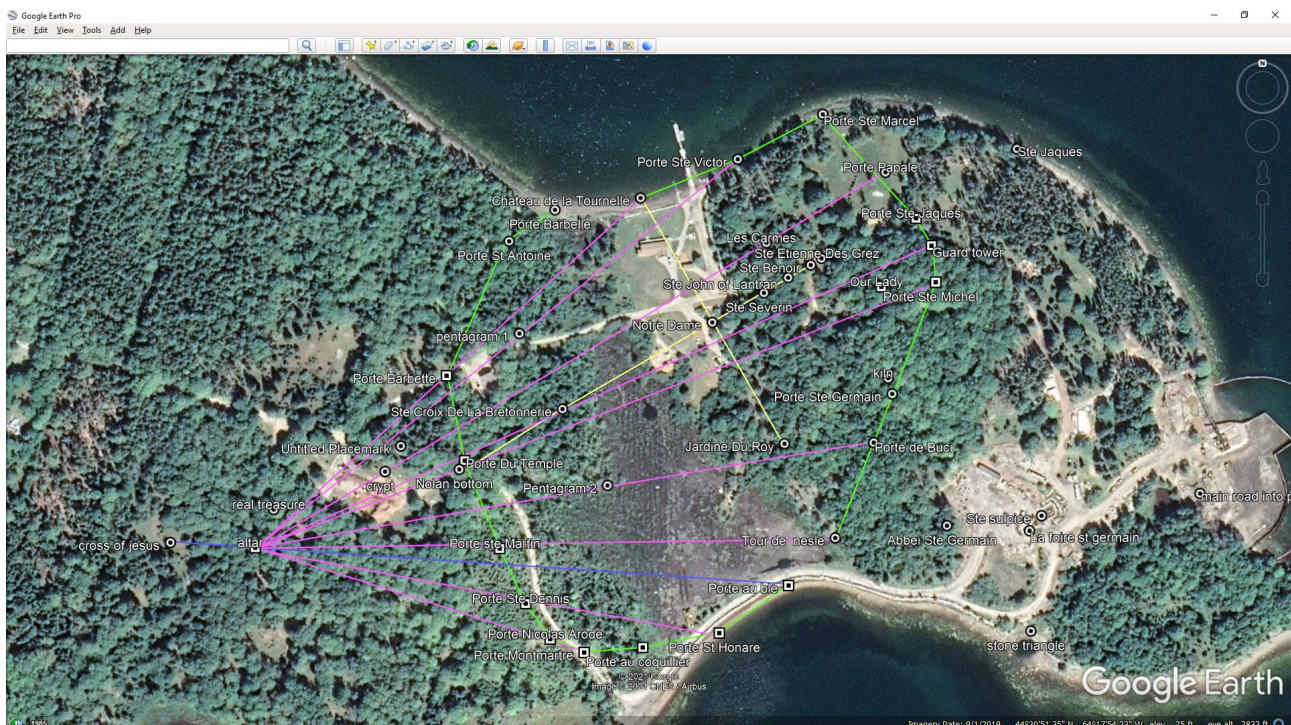
Cross of Jesus. Small pyramid shaped boulder or the lone tree. More of a marker as the treasure will be in a fault, perhaps 40ft down, certainly at the slate bedrock level.







## Altar of Ste Helena in the Holy Sepulchre



There are a lot of lines connecting this to the gates so it must be important. Ste Helena was the person who found the Cross of Jesus in the Holy Sepulchre. The Templars eventually cleared the stairs leading to St Helena's chapel and who knows what they found there after. Something very valuable to them we would guess.



Initially unable to find this on the ground as there are no references to get my bearings but I continued to look. Then.

Guess what, my brother, being a smart arse, found it with some fancy surveyor magic and yes it's hard to find. Again the tree lines helped.

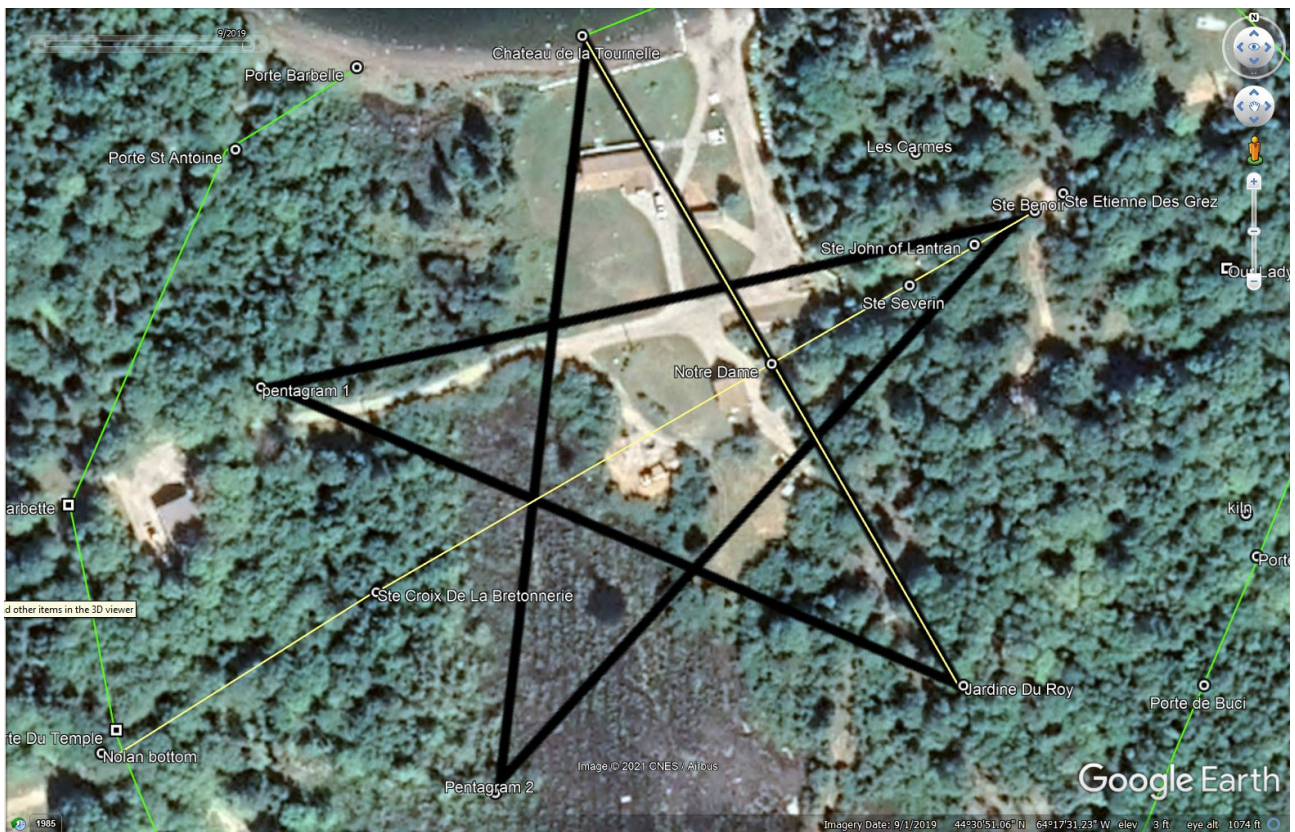


Much better when viewed in a moving video, this is one of those pixel smudges but were convinced it's there

## Recent editions

As I have said previously, Templars have a thing for pentagrams so I decide to look for one within Nolan's cross and sure enough I found one. It's obvious when it's pointed out but quite hidden from plain sight. Of course, unless you know where to look for the points all you'll see is the short legs of Nolan's cross.





Two points of the pentagram are the outer edges of Nolan's cross short legs. The right most point is Ste Benoit. The other 2 points were identified using Jeremy's drone footage. I never expected to find them to be honest and just thought it was a flight of fancy on my part but they were in the right places. Here are the 2 points in question.







Money Pit stones, boulders and stone triangle

Abbei Ste Germain, Quite a difficult one to find, not due to alignment but simply due to shadows. Of course my Master Jedi grand daughter spotted it straight away.





Ste Sulpich and “Main road into Paris” are previously found stones. La Foire Ste Germain (money pit) yet to be found but the brothers keep trying. Perhaps our gates may assist them.

And a surprise when I was looking at Jeremy's excellent vids, the guys have put the original stone triangle back



Unless we get access to the island these will be our last thoughts. Or so we thought. So before we get to those thoughts some extra additions.

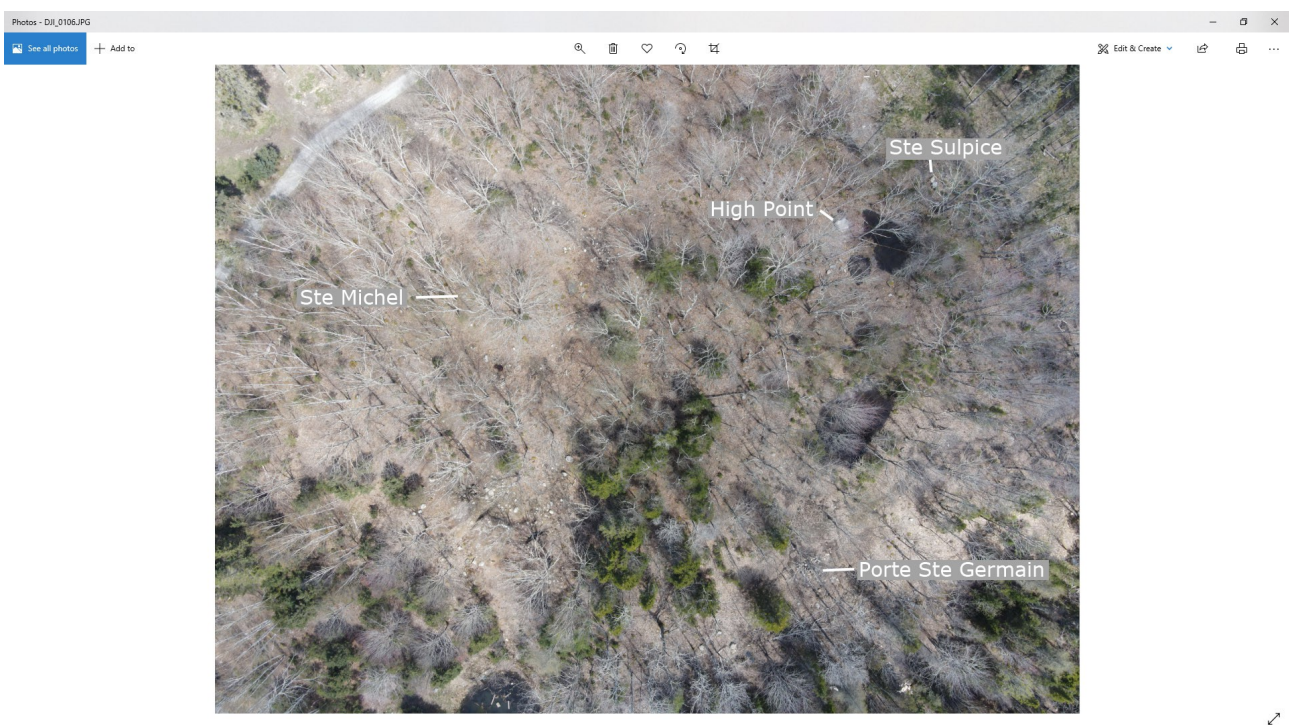
Abbei Ste Germain and Ste Sulpice revisited plus an unexpected surprise..

With the more accurate mapping the Abbei moved very slightly, perhaps 10ft at most and depending on where you take the point from in the Abbei it could be over quite a large area so perhaps the obvious stones above could also be considered. In the image below we have identified another Abbei location, the Abbei was a large area in Paris. What we did notice was another stone triangle. Looking at the 1380 map there is indeed a triangular road pattern just outside the Abbei and it points towards Notre Dame. This triangle on Oak Island also appears to point in the general direction of the Cross of Jesus. It's somewhat difficult to fully line up as the drone and photo stills show distortion from the fish eye lens. This triangle may be old or recent, no way of knowing but it's there so we mention it.





Ste Sulpice and La Foire Ste Germain. When we discussed the theory as a whole I have never been a fan of the Money pit area. We originally chose these names simply to highlight what we thought the original plan maker may have thought and that may well be correct but to be totally accurate these positions need to be corrected. Ste Sulpice has moved further north and La Foire disappeared, or at least I could not find a boulder to match. Ste Sulpich is very near the highest point on the eastern island. The highest point seems to be marked with a very large square stone and Ste Sulpice is two stones a short distance away. Perhaps this was used as a surveyors vantage point.





Some of you may be thinking that the theory was produced from the stones and boulders on Oak Island and reverse engineered. To some extent that is correct but we didn't measure or plot Nolan's cross, nor did we build the Holy Sepulchre or the walls of Paris or insert the gates at their locations. There seems to be a scale within the whole theory and that is 5, same number of points in the pentagram.

We can't finish without giving Jeremy another virtual hug. He helped to make the proof possible with his vids. His last vid, "Oak Island about to spring into life" contained a full aerial survey of our points and for that we thank him. So hands up how many spotted it was a survey. No Dave your not allowed so put your hand down. His 4K overhead shots were also very valuable.

Guess it's over to you Steve Guptill and your GPS magic pole to prove the locations wrong and eventually the brothers to prove the final location wrong. Would I, Steve, like the brothers to prove us wrong, yes is the short answer and for the following reason.

We know the brothers are desperate to find the treasure but are they prepared if they find the real treasure. Can you imagine the uproar that would follow if they did find the Cross of Jesus and who knows what else.

We have another saying in the UK and no doubt around the world.

BE CAREFUL WHAT YOU WISH FOR

Thanks to Jeremy Henderson, Jerrs Aerial Photography

Paul Joel, master Jedi geologist

Hammerson Peters, for turning the map around

Lydia, Master Jedi Granddaughter, knows everything

plus

The genius who thought up the whole plan in the first instance.

Finally

Draw a line from Nolan's cross to the Holy Sepulchre and what's the angle ?????  
Fluke or co-incidence, or perhaps ancient aliens

Here is the full Lat and Long for all the locations should Steve Guptill fancy walking around most of the island for us, If asked, both of us would gladly do the task for him. I might even get the chance to move a few boulders for better alignment.

As Nolans cross is fully documented I will skip those. Starting at Ste Victor and working in a clockwise direction



Porte Ste Victor	44°30'55.83"N	64°17'28.29"W
Porte Ste Marcel	44°30'56.75"N	64°17'25.36"W
Porte Papale	44°30'55.67"N	64°17'23.39"W
Porte Ste Jacques	44°30'54.18"N	64°17'22.48"W
Guard Tower	44°30'53.55"N	64°17'22.05"W
Porte Ste Michel	44°30'52.61"N	64°17'22.00"W
Porte Ste Germain	44°30'49.81"N	64°17'23.25"W
Porte De Buci	44°30'48.78"N	64°17'23.83"W
Tour De Nesle	44°30'45.85"N	64°17'24.97"W
Porte Au Ble	44°30'44.81"N	64°17'26.46"W
Porte Ste Honare	44°30'43.59"N	64°17'29.33"W
Porte au Coquillier	44°30'43.23"N	64°17'31.81"W
Porte Monmatre	44°30'43.22"N	64°17'33.65"W
Porte Nicolas Arode	44°30'43.65"N	64°17'35.24"W
Porte Ste Dennis	44°30'44.56"N	64°17'36.09"W
Porte Ste Martin	44°30'45.92"N	64°17'37.01"W
Porte Bianboure	44°30'46.86"N	64°17'37.58"W
Porte Du Temple 1	44°30'47.94"N	64°17'38.29"W
Porte Du Temple 2	44°30'48.77"N	64°17'38.60"W
Porte Barbette	44°30'50.23"N	64°17'38.73"W
Porte Bruder	44°30'52.20"N	64°17'38.76"W
Porte Ste Antoine	44°30'53.29"N	64°17'38.10"W
Porte Ste Paul	44°30'53.70"N	64°17'37.33"W
Porte Barbelle	44°30'54.31"N	64°17'35.56"W
Our Lady	44°30'52.47"N	64°17'23.72"W
Abbei Ste Germain	44°30'47.44"N	64°17'21.52"W
Ste Sulpice	44°30'49.21"N	64°17'20.01"W
Les Calmes	44°30'53.40"N	64°17'27.82"W
Ste Jacques	44°30'55.67"N	64°17'19.66"W
Crypt (entrance 1)	44°30'47.88"N	64°17'41.01"W
Real Treasure (entrance 2)	44°30'46.69"N	64°17'45.50"W
Altar	44°30'45.90"N	64°17'45.55"W
Cross of Jesus	44°30'46.32"N	64°17'48.61"W
Pentagram 1	44°30'51.32"N	64°17'36.35"W
Pentagram 2	44°30'47.52"N	64°17'33.25"W
Ste Severin (corrected location)	44°30'52.32"N	64°17'27.78"W
Ste John of Lantran	44°30'52.70"N	64°17'26.94"W
Ste Benoir	44°30'53.01"N	64°17'26.15"W
Ste Etienne Des Grez	44°30'53.15"N	64°17'25.83"W